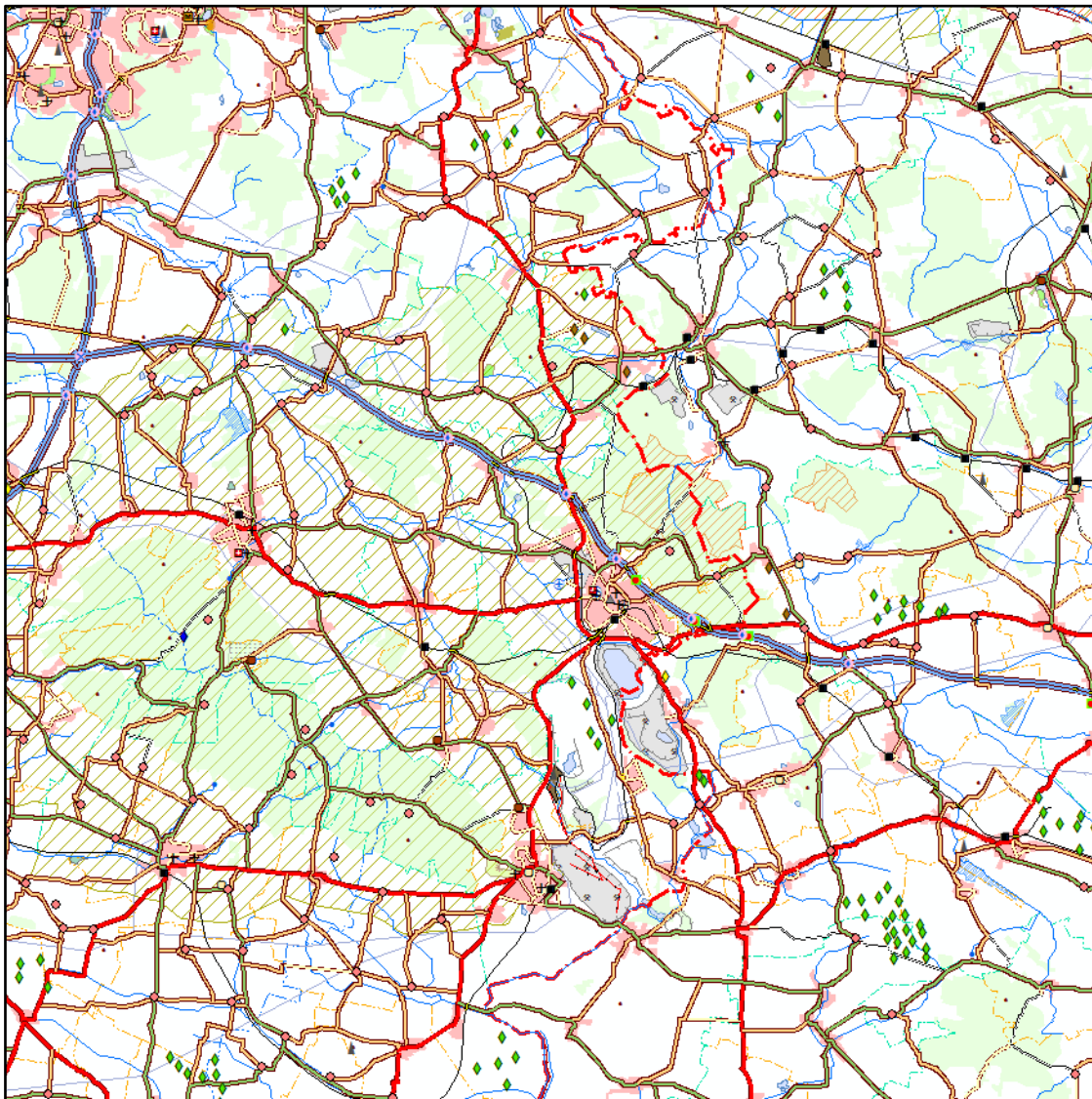




## Documentation

Digital Landscape Model 1:250 000

DLM250



## Contents

<b>1</b>	<b>Overview of the dataset</b>	<b>3</b>
<b>2</b>	<b>Description of dataset and online services</b>	<b>4</b>
2.1	Contents and format	4
<b>3</b>	<b>DLM250 Specification (Compact)</b>	<b>6</b>
3.1	Description of the dataset	6
3.2	Description of the data exchange format	6
<b>4</b>	<b>Specification DLM250 (Levels)</b>	<b>7</b>
4.1	Description of the dataset	7
4.2	Overview of the attribution of the feature types to different levels	9
4.3	Description of the levels	13
<b>5</b>	<b>Topicality and completeness</b>	<b>63</b>
<b>6</b>	<b>Recording criteria and notes</b>	<b>65</b>
<b>7</b>	<b>Receipt of data</b>	<b>71</b>
<b>8</b>	<b>Usage-Guidelines and List of Sources</b>	<b>71</b>
<b>9</b>	<b>Contact</b>	<b>71</b>

## 1 Overview of the dataset

<b>Product:</b>	Digital Landscape Model 1:250 000 (DLM250)
<b>Content:</b>	Description of the topographic landscape objects in vector format on the basis of the AFIS-ALKIS-ATKIS data model
<b>Area:</b>	Federal Republic of Germany
<b>Spatial reference:</b>	<ul style="list-style-type: none"><li>▪ UTM projection in zone 32, Ellipsoid GRS80, Datum ETRS89</li><li>▪ Gauß-Krüger projection in the 3<sup>rd</sup> meridian strip, Bessel Ellipsoid, Potsdam Datum (central point Rauenberg)</li></ul>
<b>Position accuracy:</b>	± 100m (see also section 2)
<b>Topicality and completeness:</b>	see section 5
<b>Data formats:</b>	<ul style="list-style-type: none"><li>▪ NAS (for compact)</li><li>▪ SHAPE (for levels)</li></ul>
<b>Provision*:</b>	<ul style="list-style-type: none"><li>▪ Record via Download</li><li>▪ Web Feature Service</li></ul>
<b>Historical data:</b>	Available since 2007
<b>Data volume:</b>	<ul style="list-style-type: none"><li>▪ NAS 900 MB</li><li>▪ SHAPE 1400 MB</li></ul>
<b>Data creator:</b>	Bundesamt für Kartographie und Geodäsie

\* Please note that not all forms of delivery can be provided with all georeferencing and data formats. If you have any questions, feel free to contact the service center.

## **2 Description of dataset and online services**

### **2.1 Contents and format**

The Digital Landscape Model 1:250 000 (DLM250) is part of the 'Amtliche Topographisch-Kartographische InformationsSystem' (official topographic-cartographic informationsystem) ATKIS® and is based on the joint data-model for AFIS®, ALKIS® and ATKIS®.

The Documentation on the modelling of the geodata of Official Surveying and Mapping (in short: GeoInfoDok) describes the AFIS®, ALKIS® and ATKIS® projects with their characteristics defined on a Länder-crossing basis in a continuous form. In the basic scheme, fundamental characteristics of geo objects have been illustrated. In the AAA-application scheme the application objects with their attributes are described. Of particular interest to the user is the division of the ATKIS feature type catalogues into object themes, feature type groups and feature types. A data exchange format based on open standards is specified in the present documentation on Norm-based Exchange Interface (NAS).

All documents of the GeoInfoDok have been published on the internet pages of the Arbeitsgemeinschaft der Vermessungsverwaltungen der Länder der Bundesrepublik Deutschland ([Adv](#)). Within the scope of this product documentation reference is made to these documents for the purpose of further representations and explanations.

The DLM250 describes the topographical objects of the landscape in vector format. The objects are assigned to a certain feature type and defined on the basis of their spatial position, their geometrical type, their descriptive attributes and their relations to other objects (relations). The spatial position is indicated for the DLM250 independently of scale and projection. The data have been generalized cartographically according to the symbolization catalogue 1:250 000 (SK250) of the Digital Topographic Map 1:250 000 (DTK250). Each object possesses an object identifier (OID) which is unique throughout Germany and constant for the whole lifetime of the object.

The DLM250's scope of information is described with detailed information on the individual feature types, attributes along with the attribute values and the modelling modes "[ATKIS®-Objektartenkatalog DLM250](#)" and in this documentation.

In contrast to the Basis-DLM the DLM250 does not contain the complete information on the real ground surface use. The contents concern selected feature types with certain attributes in connection with recording criteria. For example the feature class "vegetation" contains few feature types with a recording criterion concerning the areal size of the objects in question.

In the DLM250 the positional accuracy for all objects is  $\pm 100\text{m}$ . Dependent on resolution the generalization may lead to a higher value.

For the data release two types of product-processing are designed:

### **Compact**

The DLM250 (Compact) represents the DLM250 precisely as described in the respective reference version of the GeoInfoDok. Its exchange format is the Norm-Based Exchange Interface (NAS).

### **Levels**

The DLM250 (Levels) contains the whole extent of contents, but is organized with a simpler thematic data structure, which should be useful for many applications. It is based on ESRI Shapefiles.

### 3 DLM250 Specification (Compact)

#### 3.1 Description of the dataset

The dataset follows the specifications defined in the GeoInfoDok Version 6.0. The following documents supply comprehensive data on general AAA-model fundamentals, contents and modelling rules of the DLM250:

- Main document ([GeoInfoDok V6\\_0 Hauptdokument.pdf](#))  
(General Documentation on the AAA-reference model, base scheme, NAS, etc.)
- ATKIS® feature type catalogue DLM250 ([ATKIS-DLM250 6\\_0.pdf](#))  
(feature types with definition, attributes, relations etc.)

In addition:

- Modelling examples on the ATKIS® Basis-DLM ([Modellierungsbeispiele](#))
- [List of the topicality ATKIS® Basis-DLM, Stand 21.03.2012](#)

#### 3.2 Description of the data exchange format

The exchange of data in the AAA-data model is made via the Norm-Based Exchange Interface (NAS). The following documents provide comprehensive information on this interface:

- Main document ([GeoInfoDok V6\\_0 Hauptdokument.pdf](#))  
(General Documentation on the AAA-reference model, base scheme, NAS, etc.)
- External model data exchange ([NAS\\_6.0.zip](#))  
(all XML scheme files)

The data are distributed according to the following procedure:

- **Extract of inventory data**  
Data contents corresponds to a spatial and/or semantic selection from the entire dataset without possibility of a differential update.
- **User-related updating of inventory data (NBA)** (presently only available as initial equipment)  
For the keeping of secondary data sets by means of initial data equipment and subsequent differential updates (related to reporting date). The data content corresponds to a once fixed spatial and/or semantic selection from the entire dataset.

## 4 Specification DLM250 (Levels)

### 4.1 Description of the dataset

Beside the NAS the product constitutes an alternative data format for ATKIS data of the model type DLM250. In this case the focus is particularly on the immediate, uncomplicated usability of a simple level-orientated data structure in systems visualizing or further processing geodata.

#### Main characteristics from the user's point of view:

- Bundling of semantically associated feature types through definition of thematic levels.
- Direct connection of attributive data to the respective object geometries.
- Connection of non-spatial data to the relevant objects with spatial reference as far as possible.

#### Determinations on product definition:

- The data content is based on the shown scope of objects in the GeoInfoDok (feature type catalogue).
- The data model supports porting of all geometry-related feature types listed in the feature type catalogue.
- All ported data contents are provided as Shape files. Given that the Shape format can only receive objects of the same geometry type, levels normally consist of several partial levels for each relevant geometric object characteristic.
- The feature types without spatial reference (ZUSO, NREO, catalogues) contained in the DLM250 are dissolved and the technical data are directly annexed to the relevant objects with spatial reference. Thus, e.g. explicit porting of the relation *istTeilVon* is omitted.

#### Naming conventions:

- The name of a level is composed of an abbreviation for the subject with regard to contents, a consecutive numbering of the respective levels within a specific subject and an identifier for the geometry type of the objects contained.  
Example:  
Level „gew01\_f“ belongs to the level „01“ in the subject “water bodies“ and contains areal objects.
- Because of the Shape specific restriction to 10 characters the naming of the attributes cannot be done in long form as stated in the AAA-feature type catalogue. Instead, the additionally indicated attribute identifiers consisting of three characters are used (e.g. ADM for *administrativeFunktion*). It must be taken into account that some attribute identifiers can be relevant for different feature types.
- For object attributes without an indication of a short attribute identifier in the OK (e.g. AX\_Lebenszeitintervall.beginnt, AA\_Modellart.advStandardModell etc.) a designation with a maximum of 10 characters is used which can possibly deviate from the data model.

#### Attribute definitions:

- For the designation of the property attributes the short forms which are listed in the object catalogue are used. In the case of general object attributes without defined short forms self-defined short forms are used.
- Every object has an attribute which marks whether the object has an underpass relation *hatDirektUnten* or not (attribute name HDU\_X). The opposite overpass relation is not marked.
- All *hatDirektUnten* relations are combined in a separate level and are not attached to the respective objects. This level has no geometry. Thereby the evaluation of over- and underpasses in the data set is facilitated.
- If attributes have several value assignments (multiple attributes, e.g. cardinality 1..\*) the single values are combined as a string. The hash (#) acts as separator.
- The combination of different, thematically related feature types in one level leads to not all attributes of this level applying to every object. In this case text attributes remain empty. Numerical attributes have the value "-9999".
- If a numerical attribute is empty it has the value "-9998".

#### Changes of GeolInfoDok

In section 4.2 modifications (additions or deletions) are compared with the GeolInfoDok 6.0 for a future GeolInfoDok 7.x and made visible by footnotes:

<sup>1</sup> Supplement in contrast to GeolInfoDok version 6.0

<sup>2</sup> Cancellation in contrast to GeolInfoDok version 6.0

<sup>3</sup> Additional field, not part of GeolInfoDok

The footnote details are summarized at the end of each theme.



## 4.2 Overview of the attribution of the feature types to different levels

Level	Content	Feature type
-------	---------	--------------

Object theme: Settlement		
<a href="#">SIE01</a>	site, named location	52001 AX_Ortslage
<a href="#">SIE02</a>	areas dominated by buildings	41002 AX_IndustrieUndGewerbeflaeche 41003 AX_Halde <sup>1</sup> 41004 AX_Bergbaubetrieb <sup>2</sup> 41005 AX_TagebauGrubeSteinbruch 41007 AX_FlaecheBesondererFunktionalerPraegung 41008 AX_SportFreizeitUndErholungsflaeche <sup>1</sup> 41009 AX_Friedhof <sup>1</sup> 41010 AX_Siedlungsflaeche
<a href="#">SIE03</a>	buildings and other facilities	51002 AX_BauwerkOderAnlageFuerIndustrieUndGewerbe 51004 AX_Transportanlage 51005 AX_Leitung 51006 AX_BauwerkOderAnlageFuerSportFreizeitUndErholung 51007 AX_HistorischesBauwerkOderHistorischeEinrichtung <sup>1</sup> 51009 AX_SonstigesBauwerkOderSonstigeEinrichtung
<a href="#">SIE04</a>	special facilities at settlement areas	52003 AX_Schleuse 52002 AX_Hafen <sup>1</sup> 52004 AX_Grenzuebergang <sup>2</sup> 52005 AX_Testgelaende <sup>1</sup>
<a href="#">SIE05</a>	buildings	31001 AX_Gebaeude 51001 AX_Turm

Object theme: Traffic		
<a href="#">VER01</a>	road traffic	42003 AX_Strassenachse  ZUSO: 42002 AX_Strasse
<a href="#">VER02</a>	paths	42008 AX_Fahrwegachse 53003 AX_WegPfadSteig
<a href="#">VER03</a>	railway traffic	42010 AX_Bahnverkehr <sup>1</sup> 42014 AX_Bahnstrecke 53005 AX_SeilbahnSchwebbahn
<a href="#">VER04</a>	air traffic	42015 AX_Flugverkehr
<a href="#">VER05</a>	shipping traffic	57002 AX_SchiffahrtslinieFaehrverkehr

Level	Content	Feature type
<a href="#">VER06</a>	transport buildings and facilities	53001 AX_BauwerkImVerkehrsbereich 53002 AX_Strassenverkehrsanlage 53004 AX_Bahnverkehrsanlage 53007 AX_Flugverkehrsanlage 53008 AX_EinrichtungenFuerDenSchiffsverkehr <sup>1</sup> 53009 AX_BauwerkImGewaesserbereich

Object theme: Vegetation		
<a href="#">VEG01</a>	agricultural area	43001 AX_Landwirtschaft
<a href="#">VEG02</a>	forestry use	43002 AX_Wald
<a href="#">VEG03</a>	vegetation areas	43004 AX_Heide 43005 AX_Moor 43006 AX_Sumpf 43007 AX_UnlandVegetationsloseFlaeche
<a href="#">VEG04</a>	characteristic of vegetation	54001 AX_Vegetationsmerkmal

Object theme: Water bodies		
<a href="#">GEW01</a>	water bodies	44001 AX_Fliessgewaesser 44004 AX_Gewaesserachse 44005 AX_Hafenbecken <sup>1</sup> 44006 AX_StehendesGewaesser 44007 AX_Meer  ZUSO: 44002 AX_Wasserlauf 44003 AX_Kanal
<a href="#">GEW02</a>	special characteristics of water bodies	55001 AX_Gewaessermerkmal <del>57004 AX_Sickerstrecke<sup>2</sup></del>
<a href="#">GEW03</a>	axis of water line	57003 AX_Gewaesserstationierungsachse <sup>1</sup>

Object theme: Areas		
<a href="#">GEB01</a>	administrative areas	75003 AX_KommunalesGebiet 75004 AX_Gebiet_Nationalstaat 75005 AX_Gebiet_Bundesland 75006 AX_Gebiet_Regierungsbezirk 75007 AX_Gebiet_Kreis 75009 AX_Gebietsgrenze 75011 AX_Gebiet_Verwaltungsgemeinschaft <sup>1</sup> 75012 AX_KommunalesTeilgebiet <sup>2</sup>  Incl. attributes of 73001 AX_Nationalstaat 73002 AX_Bundesland 73003 AX_Regierungsbezirk 73004 AX_KreisRegion 73005 AX_Gemeinde <sup>1</sup> 73015 AX_Katalogeintrag 73025 AX_Verwaltungsgemeinschaft_ATKIS <sup>1</sup>
<a href="#">GEB02</a>	geographical areas	74001 AX_Landschaft 74002 AX_KleinraeumigerLandschaftsteil <sup>2</sup> 74004 AX_Insel
<a href="#">GEB03</a>	protected areas	71006 AX_NaturUmweltOderBodenschutzrecht 71011 AX_SonstigesRecht 71012 AX_Schutzzone  ZUSO: 71007 AX_SchutzgebietNachNaturUmweltOderBodenschutzrecht

Object theme: Relief		
<a href="#">REL01</a>	relief forms	61003 AX_DammWallDeich 61005 AX_Hoehleneingang 61008 AX_Hoehenlinie 62030 AX_Strukturlinie3D <sup>1</sup> 62040 AX_Gelaendekante <sup>2</sup>  ZUSO: 61001 AX_BoeschungKliff <sup>1</sup>
<a href="#">REL02</a>	measurement data	62020 AX_Punkt3D <sup>1</sup>

Object theme: Verical Relation		
<a href="#">HDU01</a>	relation	Referenzen HatDirektUnten

<sup>1</sup> Supplement in contrast to GeoInfoDok version 6.0

<b>Feature type</b>	<b>Note</b>
41003 AX_Halde	new feature type
41008 AX_SportFreizeitUndErholungsflaeche	new feature type
41009 AX_Friedhof	new feature type
42010 AX_Bahnverkehr	new feature type
44005 AX_Hafenbecken	new feature type
51007 AX_HistorischesBauwerkOderHistorischeEinrichtung	new feature type
52005 AX_Testgelaende	new feature type
53008 AX_EinrichtungenFuerDenSchiffsverkehr	new feature type
52002 AX_Hafen	new feature type
57003 AX_Gewaesserstationierungsachse	new feature type
61001 AX_BoeschungKliff	new feature type
62020 AX_Punkt3D	new feature type
62030 AX_Strukturlinie3D	new feature type
73005 AX_Gemeinde	new feature type
73024 AX_Verwaltungsgemeinschaft_Schluessel	new feature type
73025 AX_Verwaltungsgemeinschaft_ATKIS	new feature type
75011 AX_Gebiet_Verwaltungsgemeinschaft	new feature type

<sup>2</sup> Cancellation in contrast to GeoInfoDok version 6.0

<b>Feature type</b>	<b>Note</b>
41004 AX_Bergbaubetrieb	deleted feature type
52004 AX_Grenzuebergang	deleted feature type
57004 AX_Sickerstrecke	deleted feature type
62040 AX_Gelaendekante	deleted feature type
74002 AX_KleinraeumigerLandschaftsteil	deleted feature type
75012 AX_KommunalesTeilgebiet	deleted feature type

### 4.3 Description of the levels

#### Theme Settlement

#### SIE01\_F

<i>Field</i>	<i>Data type</i>	<i>Name</i>	<i>Applies to feature types</i>
LAND	Text(3)	landeskennung	52001 AX_Ortslage
MODELLART	Text(30)	modellartenkennung	
OBJART	Text(5)	objektart	
OBJART_TXT	Text(50)	objektartText	
OBJID	Text(16)	eindeutigerObjektidentifikator	
HDU_X	Short Integer(4)	hatDirektUntenExistiert	
BEGINN	Text(20)	lebenszeitintervallBeginnt	
ENDE	Text(20)	lebenszeitintervallEndet	
NAM	Text(180)	name	
RGS	Text(100)	regionalsprache	52001 <sup>1</sup>
ZNM	Text(100)	zweitname	<del>52001</del> <sup>2</sup>
BEMERKUNG <sup>3</sup>	Text(200)	bemerkung	52001

#### <sup>1</sup> Supplement in contrast to GeoInfoDok version 6.0

<i>Feature type</i>	<i>Label</i>	<i>Value</i>	<i>Identifier</i>	<i>Note</i>
52001	RGS			new attribute

#### <sup>2</sup> Cancellation in contrast to GeoInfoDok version 6.0

<i>Feature type</i>	<i>Label</i>	<i>Value</i>	<i>Identifier</i>	<i>Note</i>
52001	ZNM			deleted attribute

#### <sup>3</sup> Additional field, not part of GeoInfoDok

**Theme Settlement**

**SIE01\_P**

<i>Field</i>	<i>Data type</i>	<i>Name</i>	<i>Applies to feature types</i>
LAND	Text(3)	landeskennung	52001 AX_Ortslage
MODELLART	Text(30)	modellartenkennung	
OBJART	Text(5)	objektart	
OBJART_TXT	Text(50)	objektartText	
OBJID	Text(16)	eindeutigerObjektidentifikator	
HDU_X	Short Integer(4)	hatDirektUntenExistiert	
BEGINN	Text(20)	lebenszeitintervallBeginnt	
ENDE	Text(20)	lebenszeitintervallEndet	
NAM	Text(180)	name	
RGS	Text(100)	regionalsprache	52001 <sup>1</sup>
<del>ZNM</del>	Text(100)	zweitname	<del>52001<sup>2</sup></del>
BEMERKUNG <sup>3</sup>	Text(200)	bemerkung	52001

<sup>1</sup> Supplement in contrast to GeolInfoDok version 6.0

<i>Feature type</i>	<i>Label</i>	<i>Value</i>	<i>Identifier</i>	<i>Note</i>
52001	RGS			new attribute

<sup>2</sup> Cancellation in contrast to GeolInfoDok version 6.0

<i>Feature type</i>	<i>Label</i>	<i>Value</i>	<i>Identifier</i>	<i>Note</i>
52001	ZNM			deleted attribute

<sup>3</sup> Additional field, not part of GeolInfoDok

**Theme Settlement**

**SIE02\_F**

<i>Field</i>	<i>Data type</i>	<i>Name</i>	<i>Applies to feature types</i>
LAND	Text(3)	landeskennung	41002 AX_IndustrieUndGewerbeflaeche
MODELLART	Text(30)	modellartenkennung	41003 AX_Halde <sup>1</sup> 41004 AX_Bergbaubetrieb <sup>2</sup>
OBJART	Text(5)	objektart	41005 AX_TagebauGrubeSteinbruch
OBJART_TXT	Text(50)	objektartText	41007 AX_FlaecheBesondererFunktionalerPraegung
OBJID	Text(16)	eindeutigerObjektidentifikator	41008 AX_SportFreizeitUndErholungsflaeche <sup>1</sup> 41009 AX_Friedhof <sup>1</sup>
HDU_X	Short Integer(4)	hatDirektUntenExistiert	41010 AX_Siedlungsflaeche
BEGINN	Text(20)	lebenszeitintervallBeginnt	
ENDE	Text(20)	lebenszeitintervallEndet	
AGT	Text(4)	abbaugut	41005
FKT	Text(4)	funktion	41002 <sup>1</sup> , 41007 <sup>1</sup> , 41008 <sup>1</sup>
NAM	Text(100)	name	41002, 41003 <sup>1</sup> , 41005, 41007, 41008 <sup>1</sup> , 41009 <sup>1</sup> , 41010
RGS	Text(100)	regionalsprache	41010 <sup>1</sup>
ZUS	Text(4)	zustand	41002 <sup>1</sup> , 41005
BEMERKUNG <sup>3</sup>	Text(200)	bemerkung	41002, 41003 <sup>1</sup> , 41005, 41007, 41008, 41009, 41010

<sup>1</sup> Supplement in contrast to GeolInfoDok version 6.0

<i>Feature type</i>	<i>Label</i>	<i>Value</i>	<i>Identifier</i>	<i>Note</i>
41002	FKT	1450 2530 2550 2630	trade fair, fair power station refinery waste disposal site (over ground)	new attribute with new attribute values
41003				new feature type
41003	NAM			new attribute
41002	ZUS	2100 4000	out of operation, closed, abandoned under construction	new attribute with new attribute values
41007	FKT	1120	education and research	new attribute value
41008				new feature type
41008	FKT	4110 4210 4220 4230 4250 4400	golf course zoo safari-park, wildlife park amusement park open-air museum green space	new attribute with new attribute values
41008	NAM			new attribute
41009				new feature type
41009	NAM			new attribute
41010	RGS			new attribute

<sup>2</sup> Cancellation in contrast to GeolInfoDok version 6.0

<i>Feature type</i>	<i>Label</i>	<i>Value</i>	<i>Identifier</i>	<i>Note</i>
41004				deleted feature type

<sup>3</sup> Additional field, not part of GeolInfoDok



**Theme Settlement**

**SIE03\_F**

<i>Field</i>	<i>Data type</i>	<i>Name</i>	<i>Applies to feature types</i>
LAND	Text(3)	landeskennung	51002 AX_BauwerkOderAnlage- FuerIndustrieUndGewerbe
MODELLART	Text(30)	modellartenkennung	
OBJART	Text(5)	objektart	
OBJART_TXT	Text(50)	objektartText	
OBJID	Text(16)	eindeutigerObjektidentifikator	
HDU_X	Short Integer(4)	hatDirektUntenExistiert	
BEGINN	Text(20)	lebenszeitintervallBeginnt	
ENDE	Text(20)	lebenszeitintervallEndet	
BWF	Text(4)	bauwerksfunktion	
HHO	Float(6,1)	objekthoehe	51002
NAM	Text(100)	name	51002
ZUS	Text(4)	zustand	51002 <sup>1</sup>
BEMERKUNG <sup>3</sup>	Text(200)	bemerkung	51002

**<sup>1</sup> Supplement in contrast to GeoInfoDok version 6.0**

<i>Feature type</i>	<i>Label</i>	<i>Value</i>	<i>Identifier</i>	<i>Note</i>
51002	BWF	1210	settling basin	new attribute value
51002	ZUS	4000	under construction	new attribute value

**<sup>3</sup> Additional field, not part of GeoInfoDok**

**Theme Settlement**

**SIE03\_L**

<i>Field</i>	<i>Data type</i>	<i>Name</i>	<i>Applies to feature types</i>	
LAND	Text(3)	landeskennung	51004 AX_Transportanlage 51005 AX_Leitung	
MODELLART	Text(30)	modellartenkennung		
OBJART	Text(5)	objektart		
OBJART_TXT	Text(50)	objektartText		
OBJID	Text(16)	eindeutigerObjektidentifikator		
HDU_X	Short Integer(4)	hatDirektUntenExistiert		
BEGINN	Text(20)	lebenszeitintervallBeginnt		
ENDE	Text(20)	lebenszeitintervallEndet		
BWF	Text(4)	bauwerksfunktion		51004, 51005
PRO	Text(4)	produkt		51004
BEMERKUNG <sup>3</sup>	Text(200)	bemerkung	51004, 51005	

<sup>3</sup> Additional field, not part of GeolInfoDok

**Theme Settlement**

**SIE03\_P**

<i>Field</i>	<i>Data type</i>	<i>Name</i>	<i>Applies to feature types</i>
LAND	Text(3)	landeskennung	51002 AX_BauwerkOderAnlage- FuerIndustrieUndGewerbe 51006 AX_BauwerkOderAnlage- FuerSportFreizeitUndErholung 51007 AX_HistorischesBauwerkOder- HistorischeEinrichtung¹ 51009 AX_SonstigesBauwerk- OderSonstigeEinrichtung
MODELLART	Text(30)	modellartenkennung	
OBJART	Text(5)	objektart	
OBJART_TXT	Text(50)	objektartText	
OBJID	Text(16)	eindeutigerObjektidentifikator	
HDX	Short Integer(4)	hatDirektUntenExistiert	
BEGINN	Text(20)	lebenszeitintervallBeginnt	
ENDE	Text(20)	lebenszeitintervallEndet	
ATP	Text(4)	archeologischerTyp	
BWF	Text(4)	bauwerksfunktion	51002¹, 51006¹, 51009
HHO	Float(6,1)	objekthoehe	51002, 51009¹
NAM	Text(100)	name	51002, 51006, 51007¹, 51009
SPO	Text(4)	sportart	51006¹
ZUS	Text(4)	zustand	51002¹, 51006¹
BEMERKUNG³	Text(200)	bemerkung	51002, 51006, 51007¹, 51009

**<sup>1</sup> Supplement in contrast to GeolInfoDok version 6.0**

<i>Feature type</i>	<i>Label</i>	<i>Value</i>	<i>Identifier</i>	<i>Note</i>
51002	BWF	1220 1260 2530	wind turbine mast power plant	new attribute value new attribute value new attribute value
51002	ZUS	4000	under construction	new attribute value
51006	BWF	1420 1610 1620 1630 1640	race track, track, horse track zoo safari-park, wildlife park amusement park open-air theatre	new attribute value new attribute value new attribute value new attribute value new attribute value
51006	SPO	1090 1110	motor sports horse-racing	new attribute with new attribute values
51006	ZUS	2100	out of operation, closed, abandoned	new attribute value
51007				new feature type
51007	ATP	1210	watchtower (roman), lookout post	new attribute with new attribute value
51009	HHO			new attribute

**<sup>3</sup> Additional field, not part of GeolInfoDok**

**Theme Settlement**

**SIE04\_F**

<i>Field</i>	<i>Data type</i>	<i>Name</i>	<i>Applies to feature types</i>
LAND	Text(3)	landeskennung	52002 AX_Hafen <sup>1</sup>
MODELLART	Text(30)	modellartenkennung	52005 AX_Testgelaende <sup>1</sup>
OBJART	Text(5)	objektart	
OBJART_TXT	Text(50)	objektartText	
OBJID	Text(16)	eindeutigerObjektidentifikator	
HDU_X	Short Integer(4)	hatDirektUntenExistiert	
BEGINN	Text(20)	lebenszeitintervallBeginnt	
ENDE	Text(20)	lebenszeitintervallEndet	
NAM	Text(100)	name	52005 <sup>1</sup> : 52002 <sup>1</sup>
BEMERKUNG <sup>3</sup>	Text(200)	bemerkung	52005 <sup>1</sup> : 52002 <sup>1</sup>

<sup>1</sup> Supplement in contrast to GeoInfoDok version 6.0

<i>Feature type</i>	<i>Label</i>	<i>Value</i>	<i>Identifier</i>	<i>Note</i>
52002				new feature type
52002	NAM			new attribute
52005				new feature type
52005	NAM			new attribute

<sup>3</sup> Additional field, not part of GeoInfoDok

**Theme Settlement**

**SIE04\_L**

<i>Field</i>	<i>Data type</i>	<i>Name</i>	<i>Applies to feature types</i>
LAND	Text(3)	landeskennung	52003 AX_Schleuse
MODELLART	Text(30)	modellartenkennung	
OBJART	Text(5)	objektart	
OBJART_TXT	Text(50)	objektartText	
OBJID	Text(16)	eindeutigerObjektidentifikator	
HDU_X	Short Integer(4)	hatDirektUntenExistiert	
BEGINN	Text(20)	lebenszeitintervallBeginnt	
ENDE	Text(20)	lebenszeitintervallEndet	
BEZ	Text(60)	bezeichnung	
KON	Text(4)	konstruktionsmerkmalBauart	52003
NAM	Text(100)	name	52003
ZUS	Text(4)	zustand	52003
BEMERKUNG <sup>3</sup>	Text(200)	bemerkung	52003

<sup>2</sup> Cancellation in contrast to GeolInfoDok version 6.0

<i>Feature type</i>	<i>Label</i>	<i>Value</i>	<i>Identifier</i>	<i>Note</i>
52003	BEZ			deleted attribute

<sup>3</sup> Additional field, not part of GeolInfoDok

**Theme Settlement**

**SIE04\_P**

<i>Field</i>	<i>Data type</i>	<i>Name</i>	<i>Applies to feature types</i>
LAND	Text(3)	landeskennung	52002 AX_Hafen <sup>1</sup>
MODELLART	Text(30)	modellartenkennung	52003 AX_Schleuse
OBJART	Text(5)	objektart	52004 AX_Grenzuebergang <sup>2</sup>
OBJART_TXT	Text(50)	objektartText	
OBJID	Text(16)	eindeutigerObjektidentifikator	
HDU_X	Short Integer(4)	hatDirektUntenExistiert	
BEGINN	Text(20)	lebenszeitintervallBeginnt	
ENDE	Text(20)	lebenszeitintervallEndet	
BEZ	Text(60)	bezeichnung	52003 <sup>2</sup>
KON	Text(4)	konstruktionsmerkmalBauart	52003
NAM	Text(100)	name	52002 <sup>1</sup> , 52003, 52004 <sup>2</sup>
ZUS	Text(4)	zustand	52003
BEMERKUNG <sup>3</sup>	Text(200)	bemerkung	52002 <sup>1</sup> , 52003, 52004 <sup>2</sup>

**<sup>1</sup> Supplement in contrast to GeoInfoDok version 6.0**

<i>Feature type</i>	<i>Label</i>	<i>Value</i>	<i>Identifier</i>	<i>Note</i>
52002				new feature type
52002	NAM			new attribute

**<sup>2</sup> Cancellation in contrast to GeoInfoDok version 6.0**

<i>Feature type</i>	<i>Label</i>	<i>Value</i>	<i>Identifier</i>	<i>Note</i>
52003	BEZ			deleted attribute
52004				deleted feature type

**<sup>3</sup> Additional field, not part of GeoInfoDok**

**Theme Settlement**

**SIE05\_P**

<i>Field</i>	<i>Data type</i>	<i>Name</i>	<i>Applies to feature types</i>
LAND	Text(3)	landeskennung	31001 AX_Gebaeude
MODELLART	Text(30)	modellartenkennung	51001 AX_Turm
OBJART	Text(5)	objektart	
OBJART_TXT	Text(50)	objektartText	
OBJID	Text(16)	eindeutigerObjektidentifikator	
HDU_X	Short Integer(4)	hatDirektUntenExistiert	
BEGINN	Text(20)	lebenszeitintervallBeginnt	
ENDE	Text(20)	lebenszeitintervallEndet	
BWF	Text(20)	bauwerksfunktion	51001
GFK	Text(4)	gebaeudedefunktion	31001
HHO	Float(6,1)	objekthoehe	31001 <sup>1</sup> , 51001
NAM	Text(200)	name	31001, 51001
ZNM	Text(100)	zweitname	31001 <sup>1</sup>
ZUS	Text(4)	zustand	31001, 51001 <sup>1</sup>
BEMERKUNG <sup>3</sup>	Text(200)	bemerkung	31001, 51001



<sup>1</sup> Supplement in contrast to GeolInfoDok version 6.0

<i>Feature type</i>	<i>Label</i>	<i>Value</i>	<i>Identifier</i>	<i>Note</i>
31001	HHO			new attribute
31001	GFK	2732 2090 3010 3015 3042 3046 3047 3048 3072 3075	alpine cabin leisure and entertainment venues administration building court synagogue mosque temple monastery fire department prison	new attribute value
31001	ZNM			new attribute
51001	BWF	1007	fire lookout tower	new attribute value
51001	ZUS			new attribute

<sup>3</sup> Additional field, not part of GeolInfoDok

**Theme Traffic**

**VER01\_L**

Via the relation *istTeilVon* the objects of REOs *AX\_Strassenachse* (42003) refer to the ZUSOs of the feature type *AX\_Strasse* (42002). The concrete attribution is defined by the attributes *OBJART\_Z* and *OBJID\_Z*. The attributes of the ZUSO are attached to all related REOs.

<b>Field</b>	<b>Data type</b>	<b>Name</b>	<b>Applies to feature types</b>
LAND	Text(3)	landeskennung	42003 AX_Strassenachse
MODELLART	Text(30)	modellartenkennung	
OBJART	Text(5)	objektart	
OBJART_TXT	Text(50)	objektartText	
OBJID	Text(16)	eindeutigerObjektidentifikator	
HDU_X	Short Integer(4)	hatDirektUntenExistiert	
BEGINN	Text(20)	lebenszeitintervallBeginnt	
ENDE	Text(20)	lebenszeitintervallEndet	
OBJART_Z	Text(5)	Objektart des ZUSO	42003 (istTeilVon 42002 AX_Strasse)
OBJID_Z	Text(16)	Objekt-ID des ZUSO	42003 (istTeilVon 42002 AX_Strasse)
BEZ	Text(30)	bezeichnung	42003
BRF	Float(6,1)	breiteDerFahrbahn	42003
BVB	Text(4)	besondereVerkehrsbedeutung	42003 <sup>1</sup>
FKT	Text(4)	funktion	<del>42003</del> <sup>2</sup>
FSZ	Long Integer(5)	anzahlDerFahrstreifen	42003
FTR	Text(4)	fahrbahntrennung	42003
IBD	Text(4)	internationaleBedeutung	42003
NAM	Text(100)	name	<del>42003</del> <sup>2</sup>
WDM	Text(4)	widmung	42003
ZNM	Text(200)	zweitname	42003
ZUS	Text(4)	zustand	42003
BEMERKUNG <sup>3</sup>	Text(200)	bemerkung	42003

**<sup>1</sup> Supplement in contrast to GeolInfoDok version 6.0**

<i>Feature type</i>	<i>Label</i>	<i>Value</i>	<i>Identifier</i>	<i>Note</i>
42003	BVB	1000	through-going traffic, supralocal traffic	new attribute with new attribute value

**<sup>2</sup> Cancellation in contrast to GeolInfoDok version 6.0**

<i>Feature type</i>	<i>Label</i>	<i>Value</i>	<i>Identifier</i>	<i>Note</i>
42003	FKT			deleted attribute
42003	NAM			deleted attribute

**<sup>3</sup> Additional field, not part of GeolInfoDok**

**Theme Traffic**

**VER02\_L**

<i>Field</i>	<i>Data type</i>	<i>Name</i>	<i>Applies to feature types</i>
LAND	Text(3)	landeskennung	42008 AX_Fahrwegachse
MODELLART	Text(30)	modellartenkennung	53003 AX_WegPfadSteig
OBJART	Text(5)	objektart	
OBJART_TXT	Text(50)	objektartText	
OBJID	Text(16)	eindeutigerObjektidentifikator	
HDU_X	Short Integer(4)	hatDirektUntenExistiert	
BEGINN	Text(20)	lebenszeitintervallBeginnt	
ENDE	Text(20)	lebenszeitintervallEndet	
ART	Text(4)	art	53003 <sup>2</sup>
FKT	Text(4)	funktion	42008
NAM	Text(100)	name	42008 <sup>2</sup> , 53003
ZNM	Text(100)	zweitname	42008
BEMERKUNG <sup>3</sup>	Text(200)	bemerkung	42008, 53003

<sup>2</sup> Cancellation in contrast to GeolInfoDok version Version 6.0

<i>Feature type</i>	<i>Label</i>	<i>Value</i>	<i>Identifier</i>	<i>Note</i>
42008	NAM			deleted attribute
53003	ART			deleted attribute

<sup>3</sup> Additional field, not part of GeolInfoDok

**Theme Traffic**

**VER03\_F**

<i>Field</i>	<i>Data type</i>	<i>Name</i>	<i>Applies to feature types</i>
LAND	Text(3)	landeskennung	42010 AX_Bahnverkehr <sup>1</sup>
MODELLART	Text(30)	modellartenkennung	
OBJART	Text(5)	objektart	
OBJART_TXT	Text(50)	objektartText	
OBJID	Text(16)	eindeutigerObjektidentifikator	
HDU_X	Short Integer(4)	hatDirektUntenExistiert	
BEGINN	Text(20)	lebenszeitintervallBeginnt	
ENDE	Text(20)	lebenszeitintervallEndet	
BEMERKUNG <sup>3</sup>	Text(200)	bemerkung	

<sup>1</sup> Supplement in contrast to GeolInfoDok version 6.0

<i>Feature type</i>	<i>Label</i>	<i>Value</i>	<i>Identifier</i>	<i>Note</i>
42010				new feature type

<sup>3</sup> Additional field, not part of GeolInfoDok

**Theme Traffic**

**VER03\_L**

<i>Field</i>	<i>Data type</i>	<i>Name</i>	<i>Applies to feature types</i>
LAND	Text(3)	landeskennung	42014 AX_Bahnstrecke
MODELLART	Text(30)	modellartenkennung	53005 AX_SeilbahnSchwebebahn
OBJART	Text(5)	objektart	
OBJART_TXT	Text(50)	objektartText	
OBJID	Text(16)	eindeutigerObjektidentifikator	
HDU_X	Short Integer(4)	hatDirektUntenExistiert	
BEGINN	Text(20)	lebenszeitintervallBeginnt	
ENDE	Text(20)	lebenszeitintervallEndet	
BKT	Text(20)	bahnkategorie	42014 <sup>1</sup> , 53005
ELK	Text(4)	elektrifizierung	42014
GLS	Text(4)	anzahlDerStreckengleise	42014
NAM	Text(100)	name	42014 <sup>2</sup> , 53005
NRB	Text(60)	nummerDerBahnstrecke	42014
SPW	Text(4)	spurweite	42014 <sup>1</sup>
VKD	Text(4)	verkehrsdienst	42014 <sup>1</sup>
ZNM	Text(100)	zweitname	42014 <sup>1</sup>
ZUS	Text(4)	zustand	42014
BEMERKUNG <sup>3</sup>	Text(200)	bemerkung	42014, 53005

**<sup>1</sup> Supplement in contrast to GeolInfoDok version 6.0**

<i>Feature type</i>	<i>Label</i>	<i>Value</i>	<i>Identifier</i>	<i>Note</i>
42014	BKT	1101	passenger railway traffic	new attribute value
42014	SPW	9997	attribute does not apply	new attribute value
42014	VKD	1000	long-distance traffic	new attribute with new attribute value
42014	ZNM			new attribute

**<sup>2</sup> Cancellation in contrast to GeolInfoDok version Version 6.0**

<i>Feature type</i>	<i>Label</i>	<i>Value</i>	<i>Identifier</i>	<i>Note</i>
42014	NAM			deleted attribute

**<sup>3</sup> Additional field, not part of GeolInfoDok**

**Theme Traffic**

**VER04\_F**

<i>Field</i>	<i>Data type</i>	<i>Name</i>	<i>Applies to feature types</i>
LAND	Text(3)	landeskennung	42015 AX_Flugverkehr
MODELLART	Text(30)	modellartenkennung	
OBJART	Text(5)	objektart	
OBJART_TXT	Text(50)	objektartText	
OBJID	Text(16)	eindeutigerObjektidentifikator	
HDU_X	Short Integer(4)	hatDirektUntenExistiert	
BEGINN	Text(20)	lebenszeitintervallBeginnt	
ENDE	Text(20)	lebenszeitintervallEndet	
ART	Text(4)	art	
BEZ	Text(60)	bezeichnung	42015
NAM	Text(100)	name	42015
NTZ	Text(4)	nutzung	42015
ZNM	Text(100)	zweitname	42015 <sup>1</sup>
ZUS	Text(4)	zustand	42015
BEMERKUNG <sup>3</sup>	Text(200)	bemerkung	42015

**<sup>1</sup> Supplement in contrast to GeolInfoDok version 6.0**

<i>Feature type</i>	<i>Label</i>	<i>Value</i>	<i>Identifier</i>	<i>Note</i>
42015	ART	5510 5513 5521 5522 5530 5550	airport special airport civil airfield special airfield heliport glider airfield	deleted attribute value new attribute value modified attribute value modified attribute value modified attribute value new attribute value
42015	ZNM			new attribute

**<sup>3</sup> Additional field, not part of GeolInfoDok**



**Theme Traffic**

**VER05\_L**

<i>Field</i>	<i>Data type</i>	<i>Name</i>	<i>Applies to feature types</i>	
LAND	Text(3)	landeskennung	57002 AX_SchiffahrtslinieFaehrverkehr	
MODELLART	Text(30)	modellartenkennung		
OBJART	Text(5)	objektart		
OBJART_TXT	Text(50)	objektartText		
OBJID	Text(16)	eindeutigerObjektidentifikator		
HDU_X	Short Integer(4)	hatDirektUntenExistiert		
BEGINN	Text(20)	lebenszeitintervallBeginnt		
ENDE	Text(20)	lebenszeitintervallEndet		
ART	Text(20)	art		57002 <sup>2</sup>
NAM	Text(100)	name		57002
BEMERKUNG <sup>3</sup>	Text(200)	bemerkung	57002	

<sup>2</sup> Cancellation in contrast to GeolInfoDok version 6.0

<i>Feature type</i>	<i>Label</i>	<i>Value</i>	<i>Identifier</i>	<i>Note</i>
57002	ART	1740	scheduled services	deleted attribute value

<sup>3</sup> Additional field, not part of GeolInfoDok

**Theme Traffic**

**VER06\_F**

<i>Field</i>	<i>Data type</i>	<i>Name</i>	<i>Applies to feature types</i>
LAND	Text(3)	landeskennung	53001 AX_BauwerkImVerkehrsbereich
MODELLART	Text(30)	modellartenkennung	53009 AX_BauwerkImGewaesserbereich
OBJART	Text(5)	objektart	
OBJART_TXT	Text(50)	objektartText	
OBJID	Text(16)	eindeutigerObjektidentifikator	
HDU_X	Short Integer(4)	hatDirektUntenExistiert	
BEGINN	Text(20)	lebenszeitintervallBeginnt	
ENDE	Text(20)	lebenszeitintervallEndet	
BWF	Text(4)	bauwerksfunktion	53001, 53009 <sup>1</sup>
NAM	Text(100)	name	53001, 53009 <sup>1</sup>
RGS	Text(100)	regionalsprache	53009 <sup>1</sup>
ZUS	Text(4)	zustand	53001 <sup>1</sup> , 53009 <sup>1</sup>
BEMERKUNG <sup>3</sup>	Text(200)	bemerkung	53001, 53009

**<sup>1</sup> Supplement in contrast to GeoInfoDok version 6.0**

<i>Feature type</i>	<i>Label</i>	<i>Value</i>	<i>Identifier</i>	<i>Note</i>
53001	ZUS	2100 4000	out of operation, closed, abandoned under construction	new attribute with new attribute values
53009	BWF	2013 2020	water tunnel, water power gallery retention basin	new attribute value new attribute value
53009	NAM			new attribute
53009	RGS			new attribute
53009	ZUS	2100 4000	out of operation, closed, abandoned under construction	new attribute with new attribute values

**<sup>3</sup> Additional field, not part of GeoInfoDok**

**Theme Traffic**

**VER06\_L**

<i>Field</i>	<i>Data type</i>	<i>Name</i>	<i>Applies to feature types</i>
LAND	Text(3)	landeskennung	53001 AX_BauwerkImVerkehrsbereich
MODELLART	Text(30)	modellartenkennung	53007 AX_Flugverkehrsanlage
OBJART	Text(5)	objektart	53009 AX_BauwerkImGewaesserbereich
OBJART_TXT	Text(50)	objektartText	
OBJID	Text(16)	eindeutigerObjektidentifikator	
HDU_X	Short Integer(4)	hatDirektUntenExistiert	
BEGINN	Text(20)	lebenszeitintervallBeginnt	
ENDE	Text(20)	lebenszeitintervallEndet	
ART	Text(4)	art	53007
BEZ	Text(60)	bezeichnung	53007
BRO	Float(6,1)	breiteDesObjekts	53007
BWF	Text(4)	bauwerksfunktion	53001, 53009 <sup>1</sup>
NAM	Text(100)	name	53001, 53007, 53009
RGS	Text(100)	regionalsprache	53009 <sup>1</sup>
OFM	Text(4)	oberflaechenmaterial	53007
ZNM	Text(100)	zweitname	53007 <sup>1</sup>
ZUS	Text(4)	zustand	53001 <sup>1</sup> , 53007 <sup>1</sup> , 53009
BEMERKUNG <sup>3</sup>	Text(200)	bemerkung	53001, 53007, 53009

<sup>1</sup> Supplement in contrast to GeolInfoDok version 6.0

<i>Feature type</i>	<i>Label</i>	<i>Value</i>	<i>Identifier</i>	<i>Note</i>
53001	ZUS	2100 4000	out of operation, closed, abandoned under construction	new attribute with new attribute values
53007	ZNM			new attribute
53007	ZUS	2100 4000	out of operation, closed, abandoned under construction	new attribute with new attribute values
53009	BWF	2013 2090	water tunnel, water power gallery pumping station	new attribute value new attribute value
53009	RGS			new attribute

<sup>3</sup> Additional field, not part of GeolInfoDok

**Theme Traffic**

**VER06\_P**

<i>Field</i>	<i>Data type</i>	<i>Name</i>	<i>Applies to feature types</i>
LAND	Text(3)	landeskennung	53002 AX_Strassenverkehrsanlage
MODELLART	Text(30)	modellartenkennung	53004 AX_Bahnverkehrsanlage
OBJART	Text(5)	objektart	53007 AX_Flugverkehrsanlage
OBJART_TXT	Text(50)	objektartText	53008 AX_EinrichtungenFuerDenSchiffsverkehr <sup>1</sup>
OBJID	Text(16)	eindeutigerObjektidentifikator	53009 AX_BauwerkImGewaesserbereich
HDU_X	Short Integer(4)	hatDirektUntenExistiert	
BEGINN	Text(20)	lebenszeitintervallBeginnt	
ENDE	Text(20)	lebenszeitintervallEndet	
ART	Text(4)	art	53002 <sup>1,2</sup> , 53007 <sup>1</sup> , 53008 <sup>1</sup>
BEZ	Text(60)	bezeichnung	53002, 53004, 53007, 53008 <sup>1</sup>
BFK	Text(4)	bahnhofskategorie	53004
BKT	Text(20)	bahnkategorie	53004
BRO	Float(6,1)	breiteDesObjekts	53007
BWF	Text(4)	bauwerksfunktion	53009 <sup>1</sup>
NAM	Text(100)	name	53002, 53004, 53007, 53008 <sup>1</sup> , 53009
OFM	Text(4)	oberflaechenmaterial	53007
RGS	Text(100)	regionalsprache	53009 <sup>1</sup>
VKD	Text(4)	verkehrsdienst	53004 <sup>1</sup>
ZNM	Text(100)	zweitname	53007 <sup>1</sup>
ZUS	Text(4)	zustand	53004, 53007 <sup>1</sup> , 53008 <sup>1</sup> , 53009
BEMERKUNG <sup>3</sup>	Text(200)	bemerkung	53002, 53004, 53007, 53008 <sup>1</sup> , 53009

<sup>1</sup> Supplement in contrast to GeolInfoDok version 6.0

<i>Feature type</i>	<i>Label</i>	<i>Value</i>	<i>Identifier</i>	<i>Note</i>
53002	ART	3001 3002 3003	interchange triangular interchange junction	new attribute value new attribute value new attribute value
53004	BKT	1103	Operation traffic	new attribute value
53004	VKD	1000	long-distance traffic stop	new attribute with new attribute value
53007	ART	5521 5522 5530 5560 9998	civil airfield special airfield heliport water airstrip can't be specified according to source material	modified attribute value modified attribute value modified attribute value new attribute value new attribute value
53007	ZNM			new attribute
53007	ZUS	2100 4000	out of operation, closed, abandoned under construction	new attribute with new attribute values
53008				new feature type
53008	ART	1410 1420	beacon light beacon	new attribute with new attribute values
53008	BEZ			new attribute
53008	NAM			new attribute
53008	ZUS	2100	out of operation, closed, abandoned	new attribute with new attribute value
53009	BWF	2090	pumping station	new attribute value
53009	RGS			new attribute

<sup>2</sup> Cancellation in contrast to GeolInfoDok version 6.0

<i>Feature type</i>	<i>Label</i>	<i>Value</i>	<i>Identifier</i>	<i>Note</i>
53002	ART	3000	motorway interchange	deleted attribute value

<sup>3</sup> Additional field, not part of GeolInfoDok

**Theme Vegetation**

**VEG01\_F**

<i>Field</i>	<i>Data type</i>	<i>Name</i>	<i>Applies to feature types</i>
LAND	Text(3)	landeskennung	43001 AX_Landwirtschaft
MODELLART	Text(30)	modellartenkennung	
OBJART	Text(5)	objektart	
OBJART_TXT	Text(50)	objektartText	
OBJID	Text(16)	eindeutigerObjektidentifikator	
HDU_X	Short Integer(4)	hatDirektUntenExistiert	
BEGINN	Text(20)	lebenszeitintervallBeginnt	
ENDE	Text(20)	lebenszeitintervallEndet	
NAM	Text(100)	name	
VEG	Text(4)	vegetationsmerkmal	43001
BEMERKUNG <sup>3</sup>	Text(200)	bemerkung	43001

<sup>1</sup> Supplement in contrast to GeolInfoDok version 6.0

<i>Feature type</i>	<i>Label</i>	<i>Value</i>	<i>Identifier</i>	<i>Note</i>
43001	NAM			new attribute

<sup>3</sup> Additional field, not part of GeolInfoDok

**Theme Vegetation**

**VEG02\_F**

<i>Field</i>	<i>Data type</i>	<i>Name</i>	<i>Applies to feature types</i>
LAND	Text(3)	landeskennung	43002 AX_Wald
MODELLART	Text(30)	modellartenkennung	
OBJART	Text(5)	objektart	
OBJART_TXT	Text(50)	objektartText	
OBJID	Text(16)	eindeutigerObjektidentifikator	
HDU_X	Short Integer(4)	hatDirektUntenExistiert	
BEGINN	Text(20)	lebenszeitintervallBeginnt	
ENDE	Text(20)	lebenszeitintervallEndet	
NAM	Text(100)	name	
RGS	Text(100)	regionalsprache	43002 <sup>1</sup>
ZUS	Text(4)	zustand	43002 <sup>1</sup>
BEMERKUNG <sup>3</sup>	Text(200)	bemerkung	43002

**<sup>1</sup> Supplement in contrast to GeoInfoDok version 6.0**

<i>Feature type</i>	<i>Label</i>	<i>Value</i>	<i>Identifier</i>	<i>Note</i>
43002	RGS			new attribute
43002	ZUS	6200	forest burial ground	new attribute with new attribute value

**<sup>3</sup> Additional field, not part of GeoInfoDok**



**Theme Vegetation**

**VEG03\_F**

<i>Field</i>	<i>Data type</i>	<i>Name</i>	<i>Applies to feature types</i>
LAND	Text(3)	landeskennung	43004 AX_Heide
MODELLART	Text(30)	modellartenkennung	43005 AX_Moor
OBJART	Text(5)	objektart	43006 AX_Sumpf
OBJART_TXT	Text(50)	objektartText	43007 AX_UnlandVegetationsloseFlaeche
OBJID	Text(16)	eindeutigerObjektidentifikator	
HDU_X	Short Integer(4)	hatDirektUntenExistiert	
BEGINN	Text(20)	lebenszeitintervallBeginnt	
ENDE	Text(20)	lebenszeitintervallEndet	
FKT	Text(4)	funktion	43007
NAM	Text(100)	name	43004 <sup>1</sup> , 43005 <sup>1</sup> , 43006 <sup>1</sup> , 43007 <sup>1</sup>
OFM	Text(4)	oberflaechenmaterial	43007 <sup>2</sup>
BEMERKUNG <sup>3</sup>	Text(200)	bemerkung	43004, 43005, 43006, 43007

**<sup>1</sup> Supplement in contrast to GeolInfoDok version 6.0**

<i>Feature type</i>	<i>Label</i>	<i>Value</i>	<i>Identifier</i>	<i>Note</i>
43004	NAM			new attribute
43005	NAM			new attribute
43006	NAM			new attribute
43007	NAM			new attribute

**<sup>2</sup> Cancellation in contrast to GeolInfoDok version 6.0**

<i>Feature type</i>	<i>Label</i>	<i>Value</i>	<i>Identifier</i>	<i>Note</i>
43007	OFM	1020 1030 1110	stones, gravel rubble snow	deleted attribute value deleted attribute value deleted attribute value

**<sup>3</sup> Additional field, not part of GeolInfoDok**

**Theme Vegetation**

**VEG04\_F**

<i>Field</i>	<i>Data type</i>	<i>Name</i>	<i>Applies to feature types</i>	
LAND	Text(3)	landeskennung	54001 AX_Vegetationsmerkmal	
MODELLART	Text(30)	modellartenkennung		
OBJART	Text(5)	objektart		
OBJART_TXT	Text(50)	objektartText		
OBJID	Text(16)	eindeutigerObjektidentifikator		
HDU_X	Short Integer(4)	hatDirektUntenExistiert		
BEGINN	Text(20)	lebenszeitintervallBeginnt		
ENDE	Text(20)	lebenszeitintervallEndet		
BWS	Text(4)	bewuchs		54001 <sup>1</sup>
NAM	Text(100)	name		54001 <sup>1</sup>
ZUS	Text(4)	zustand	54001	
BEMERKUNG <sup>3</sup>	Text(200)	bemerkung	54001	

**<sup>1</sup> Supplement in contrast to GeoInfoDok version 6.0**

<i>Feature type</i>	<i>Label</i>	<i>Value</i>	<i>Identifier</i>	<i>Note</i>
54001	BWS	1020	tree population	new attribute with new attribute value
54001	NAM			new attribute

**<sup>3</sup> Additional field, not part of GeoInfoDok**

**Theme Water bodies**

**GEW01\_F**

Via the relation *istTeilVon* the objects of REOs *AX\_Fliessgewaesser* (44001) refer to the ZUSOs of the feature type *AX\_Wasserlauf* (44002) or *AX\_Kanal* (44003). The concrete attribution is defined by the attributes *OBJART\_Z* and *OBJID\_Z*. The attributes of the ZUSO are attached to all related REOs.

<b>Field</b>	<b>Data type</b>	<b>Name</b>	<b>Applies to feature types</b>
LAND	Text(3)	landeskennung	44001 AX_Fliessgewaesser
MODELLART	Text(30)	modellartenkennung	44005 AX_Hafenbecken <sup>1</sup> 44006 AX_StehendesGewaesser
OBJART	Text(5)	objektart	44007 AX_Meer
OBJART_TXT	Text(50)	objektartText	
OBJID	Text(16)	eindeutigerObjektidentifikator	
HDU_X	Short Integer(4)	hatDirektUntenExistiert	
BEGINN	Text(20)	lebenszeitintervallBeginnt	
ENDE	Text(20)	lebenszeitintervallEndet	
OBJART_Z	Text(5)	Objektart des ZUSO	44001 (istTeilVon 44002 / 44003)
OBJID_Z	Text(16)	Objekt-ID des ZUSO	44001 (istTeilVon 44002 / 44003)
FKT	Text(4)	funktion	44001, 44006 <sup>1</sup>
GWK	Text(20)	gewaesserkennzahl	44001, 44006 <sup>2</sup>
HYD	Text(4)	hydrologischesMerkmal	44001, 44006 <sup>1</sup>
NAM	Text(100)	name	44001, 44005 <sup>1</sup> , 44006, 44007
RGS	Text(100)	regionalsprache	44001 <sup>1</sup> , 44006 <sup>1</sup> , 44007 <sup>1</sup>
SFK	Text(4)	schiffahrtskategorie	44001, 44006
SKZ	Text(20)	seekennzahl	44006 <sup>1</sup>
WDM	Text(4)	widmung	44001, 44006
WSG	Float(6,1)	wasserspiegelhoeheInStehendemGewaesser	44006 <sup>1</sup>
ZNM	Text(100)	zweitname	44001, 44006 <sup>1</sup> , 44007
ZUS	Text(4)	zustand	44001
BEMERKUNG <sup>3</sup>	Text(200)	bemerkung	44001, 44005 <sup>1</sup> , 44006, 44007

<sup>1</sup> Supplement in contrast to GeolInfoDok version 6.0

<i>Feature type</i>	<i>Label</i>	<i>Value</i>	<i>Identifier</i>	<i>Note</i>
44001	RGS			new attribute
44005				new feature type
44005	NAM			new attribute
44006	FKT	8630 8631 8640	reservoir storage basin quarry pond	new attribute with new attribute values
44006	HYD	2000	not permanently water-bearing	new attribute with new attribute value
44006	RGS			new attribute
44006	SKZ			new attribute
44006	WSG			new attribute
44006	ZNM			new attribute
44007	RGS			new attribute

<sup>2</sup> Cancellation in contrast to GeolInfoDok version 6.0

<i>Feature type</i>	<i>Label</i>	<i>Value</i>	<i>Identifier</i>	<i>Note</i>
44006	GWK			deleted attribute

<sup>3</sup> Additional field, not part of GeolInfoDok

**Theme Water bodies**

**GEW01\_L**

Via the relation *istTeilVon* the objects of REOs *AX\_Gewaesserachse* (44004) refer to the ZUSOs of the feature type *AX\_Wasserlauf* (44002) or *AX\_Kanal* (44003). The concrete attribution is defined by the attributes *OBJART\_Z* and *OBJID\_Z*. The attributes of the ZUSO are attached to all related REOs.

<b>Field</b>	<b>Data type</b>	<b>Name</b>	<b>Applies to feature types</b>
LAND	Text(3)	landeskennung	44004 AX_Gewaesserachse
MODELLART	Text(30)	modellartenkennung	
OBJART	Text(5)	objektart	
OBJART_TXT	Text(50)	objektartText	
OBJID	Text(16)	eindeutigerObjektidentifikator	
HDU_X	Short Integer(4)	hatDirektUntenExistiert	
BEGINN	Text(20)	lebenszeitintervallBeginnt	
ENDE	Text(20)	lebenszeitintervallEndet	
OBJART_Z	Text(5)	Objektart des ZUSO	
OBJID_Z	Text(16)	Objekt-ID des ZUSO	44004 (istTeilVon 44002 / 44003)
BRG	Short integer(2)	breiteDesGewaessers	44004
FKT	Text(4)	funktion	44004
FLR	Short integer(1)	fliessrichtung	44004
GWK	Text(20)	gewaesserkennzahl	44004
HYD	Text(4)	hydrologischesMerkmal	44004
NAM	Text(100)	name	44004
RGS	Text(100)	regionalsprache	44004 <sup>1</sup>
SFK	Text(4)	schiffahrtskategorie	44004
WDM	Text(4)	widmung	44004
ZNM	Text(100)	zweitname	44004
ZUS	Text(4)	zustand	44004

BEMERKUNG <sup>3</sup>	Text(200)	bemerkung	44004
------------------------	-----------	-----------	-------

<sup>1</sup> Supplement in contrast to GeolInfoDok version 6.0

<i>Feature type</i>	<i>Label</i>	<i>Value</i>	<i>Identifier</i>	<i>Note</i>
44004	RGS			new attribute

<sup>3</sup> Additional field, not part of GeolInfoDok

**Theme Water bodies**

**GEW02\_F**

<i>Field</i>	<i>Data type</i>	<i>Name</i>	<i>Applies to feature types</i>
LAND	Text(3)	landeskennung	55001 AX_Gewaessermerkmal
MODELLART	Text(30)	modellartenkennung	
OBJART	Text(5)	objektart	
OBJART_TXT	Text(50)	objektartText	
OBJID	Text(16)	eindeutigerObjektidentifikator	
HDU_X	Short Integer(4)	hatDirektUntenExistiert	
BEGINN	Text(20)	lebenszeitintervallBeginnt	
ENDE	Text(20)	lebenszeitintervallEndet	
ART	Text(4)	art	55001
BEZ	Text(60)	bezeichnung	55001 <sup>2</sup>
NAM	Text(100)	name	55001
RGS	Text(100)	regionalsprache	55001 <sup>1</sup>
ZNM	Text(100)	zweitname	55001 <sup>1</sup>
BEMERKUNG <sup>3</sup>	Text(200)	bemerkung	55001

**<sup>1</sup> Supplement in contrast to GeoInfoDok version 6.0**

<i>Feature type</i>	<i>Label</i>	<i>Value</i>	<i>Identifier</i>	<i>Note</i>
55001	ZNM			new attribute
55001	RGS			new attribute

**<sup>2</sup> Cancellation in contrast to GeoInfoDok version 6.0**

<i>Feature type</i>	<i>Label</i>	<i>Value</i>	<i>Identifier</i>	<i>Note</i>
55001	BEZ			deleted attribute

**<sup>3</sup> Additional field, not part of GeoInfoDok**

**Theme Water bodies**

**GEW02\_P**

<i>Field</i>	<i>Data type</i>	<i>Name</i>	<i>Applies to feature types</i>
LAND	Text(3)	landeskennung	55001 AX_Gewaessermerkmal
MODELLART	Text(30)	modellartenkennung	
OBJART	Text(5)	objektart	
OBJART_TXT	Text(50)	objektartText	
OBJID	Text(16)	eindeutigerObjektidentifikator	
HDU_X	Short Integer(4)	hatDirektUntenExistiert	
BEGINN	Text(20)	lebenszeitintervallBeginnt	
ENDE	Text(20)	lebenszeitintervallEndet	
ART	Text(4)	art	
BEZ	Text(60)	bezeichnung	<del>55001</del> <sup>2</sup>
NAM	Text(100)	name	55001
RGS	Text(100)	regionalsprache	55001 <sup>1</sup>
ZNM	Text(100)	zweitname	55001 <sup>1</sup>
BEMERKUNG <sup>3</sup>	Text(200)	bemerkung	55001

**<sup>1</sup> Supplement in contrast to GeolInfoDok version 6.0**

<i>Feature type</i>	<i>Label</i>	<i>Value</i>	<i>Identifier</i>	<i>Note</i>
55001	RGS			new attribute
55001	ZNM			new attribute

**<sup>2</sup> Cancellation in contrast to GeolInfoDok version 6.0**

<i>Feature type</i>	<i>Label</i>	<i>Value</i>	<i>Identifier</i>	<i>Note</i>
55001	BEZ			deleted attribute

**<sup>3</sup> Additional field, not part of GeolInfoDok**



**Theme Water bodies**

**GEW03\_L**

<i>Field</i>	<i>Data type</i>	<i>Name</i>	<i>Applies to feature types</i>
LAND	Text(3)	landeskennung	57003 AX_Gewaesserstationierungsachse <sup>1</sup>
MODELLART	Text(30)	modellartenkennung	
OBJART	Text(5)	objektart	
OBJART_TXT	Text(50)	objektartText	
OBJID	Text(16)	eindeutigerObjektidentifikator	
HDU_X	Short Integer(4)	hatDirektUntenExistiert	
BEGINN	Text(20)	lebenszeitintervallBeginnt	
ENDE	Text(20)	lebenszeitintervallEndet	
AGA	Text(4)	artDerGewaesserachse	57003 <sup>1</sup>
FLR	Short Integer(1)	fliesrichtung	57003 <sup>1</sup>
GWK	Text(30)	gewaesserkennzahl	57003 <sup>1</sup>
NAM	Text(100)	name	57003 <sup>1</sup>
RGS	Text(100)	regionalsprache	57003 <sup>1</sup>
SFK	Text(4)	schiffahrtskategorie	57003 <sup>1</sup>
ZNM	Text(100)	zweitname	57003 <sup>1</sup>
BEMERKUNG <sup>3</sup>	Text(200)	bemerkung	57003 <sup>1</sup>

**<sup>1</sup> Supplement in contrast to GeolInfoDok version 6.0**

<i>Feature type</i>	<i>Label</i>	<i>Value</i>	<i>Identifier</i>	<i>Note</i>
57003				new feature type
57003	AGA	2000 3001 3002	approximate axis in water bodies fictitious connection in watercourses fictitious connection in lakes and ponds	new attribute with new attribute values
57003	FLR			new attribute
57003	GWK			new attribute
57003	NAM			new attribute
57003	RGS			new attribute
57003	SFK	1000 2000 3000	inland waterway sea waterway land water bodies with traffic regulation	new attribute with new attribute values
57003	ZNM			new attribute

**<sup>3</sup> Additional field, not part of GeolInfoDok**

## Theme Areas

### GEB01\_F

The attributes *name*, *key* and *administrative function* from the object group *catalogues* are added to the objects of the administrative areal units.

<b>Field</b>	<b>Data type</b>	<b>Name</b>	<b>Applies to feature types</b>
LAND	Text(3)	landeskennung	75003 AX_KommunalesGebiet
MODELLART	Text(30)	modellartenkennung	75004 AX_Gebiet_Nationalstaat
OBJART	Text(5)	objektart	75005 AX_Gebiet_Bundesland
OBJART_TXT	Text(50)	objektartText	75006 AX_Gebiet_Regierungsbezirk
OBJID	Text(16)	eindeutigerObjektidentifikator	75007 AX_Gebiet_Kreis
HDU_X	Short Integer(4)	hatDirektUntenExistiert	75011 AX_Gebiet_Verwaltungsgemeinschaft <sup>1</sup>
BEGINN	Text(20)	lebenszeitintervallBeginnt	
ENDE	Text(20)	lebenszeitintervallEndet	
ADM	Text(20)	administrativeFunktion	75003, 75004, 75005, 75006, 75007, 75011 <sup>1</sup>
BEZ_NAT	Text(60)	bezeichnungNationalstaat	75003, 75004, 75005, 75006, 75007, 75011 <sup>1</sup>
BEZ_LAN	Text(60)	bezeichnungLand	75003, 75005, 75006, 75007, 75011 <sup>1</sup>
BEZ_RBZ	Text(60)	bezeichnungRegierungsbezirk	75003, 75006, 75007, 75011 <sup>1</sup>
BEZ_KRS	Text(60)	bezeichnungKreis	75003, 75007, 75011 <sup>1</sup>
BEZ_VWG	Text(60)	bezeichnungVerwaltungsgemeinschaft	75003, 75011 <sup>1</sup>
BEZ_GEM	Text(60)	bezeichnungGemeinde	75003
RGS	Text(100)	regionalsprache	75003 <sup>1</sup> , 75004 <sup>1</sup> , 75005 <sup>1</sup> , 75006 <sup>1</sup> , 75007 <sup>1</sup> , 75011 <sup>1</sup>
SCH	Text(20)	schluesselGesamt	75003, 75004, 75005, 75006, 75007, 75011 <sup>1</sup>
BEMERKUNG <sup>3</sup>	Text(200)	bemerkung	75003, 75004, 75005, 75006, 75007, 75011 <sup>1</sup>

<sup>1</sup> Supplement in contrast to GeolInfoDok version 6.0

<i>Feature type</i>	<i>Label</i>	<i>Value</i>	<i>Identifier</i>	<i>Note</i>
75003	RGS			new attribute
75004	RGS			new attribute
75005	RGS			new attribute
75006	RGS			new attribute
75007	RGS			new attribute
75011				new feature type
75011	BEZ_VWG			new attribute
75011	RGS			new attribute

<sup>3</sup> Additional field, not part of GeolInfoDok

**Theme Areas**

**GEB01\_L**

<i>Feature type</i>	<i>Label</i>	<i>Value</i>	<i>Identifier</i>
LAND	Text(3)	landeskennung	75009 AX_Gebietsgrenze
MODELLART	Text(30)	modellartenkennung	
OBJART	Text(5)	objektart	
OBJART_TXT	Text(50)	objektartText	
OBJID	Text(16)	eindeutigerObjektidentifikator	
HDU_X	Short Integer(4)	hatDirektUntenExistiert	
BEGINN	Text(20)	lebenszeitintervallBeginnt	
ENDE	Text(20)	lebenszeitintervallEndet	
AGZ	Text(30)	artDerGebietsgrenze	
ZUS	Text(4)	zustand	75009 <sup>1</sup>
BEMERKUNG <sup>3</sup>	Text(200)	bemerkung	75009

**<sup>1</sup> Supplement in contrast to GeoInfoDok version 6.0**

<i>Feature type</i>	<i>Label</i>	<i>Value</i>	<i>Identifier</i>	<i>Note</i>
75009	AGZ	7100 7108	boundary of a state boundary of a condominium	new attribute value new attribute value
75009	ZUS	4100	in dispute	new attribute with new attribute value

**<sup>3</sup> Additional field, not part of GeoInfoDok**

**Theme Areas**

**GEB02\_F**

<i>Field</i>	<i>Data type</i>	<i>Name</i>	<i>Applies to feature types</i>
LAND	Text(3)	landeskennung	74001 AX_Landschaft
MODELLART	Text(30)	modellartenkennung	74002 AX_KleinraeumigerLandschaftsteil <sup>2</sup>
OBJART	Text(5)	objektart	74004 AX_Insel
OBJART_TXT	Text(50)	objektartText	
OBJID	Text(16)	eindeutigerObjektidentifikator	
HDU_X	Short Integer(4)	hatDirektUntenExistiert	
BEGINN	Text(20)	lebenszeitintervallBeginnt	
ENDE	Text(20)	lebenszeitintervallEndet	
LTP	Text(4)	landschaftstyp	74001 <sup>1</sup>
NAM	Text(100)	name	74001, 74004
RGS	Text(100)	regionalsprache	74001 <sup>1</sup> , 74004 <sup>1</sup>
BEMERKUNG <sup>3</sup>	Text(200)	bemerkung	74001, 74004

**<sup>1</sup> Supplement in contrast to GeolInfoDok version 6.0**

<i>Feature type</i>	<i>Label</i>	<i>Value</i>	<i>Identifier</i>	<i>Note</i>
74001	LTP	1100 1200 1300 1400 1500 1600 1700 1800 1900 2200 2400 2500 2600	mountains, highland, downs hill, mountains basin, depression valley, lowland lowlands, plain plateau, tableland estuary sand dunes woodlands, heathlands settlement regions, industrial estates heathlands coastal area historically distinct landscape	modified attribute identifier modified attribute identifier modified attribute identifier modified attribute identifier modified attribute identifier modified attribute identifier deleted attribute value deleted attribute value modified attribute identifier modified attribute identifier deleted attribute value modified attribute identifier new attribute value
74001	RGS			new attribute
74004	RGS			new attribute

**<sup>2</sup> Cancellation in contrast to GeolInfoDok version 6.0**

<i>Feature type</i>	<i>Label</i>	<i>Value</i>	<i>Identifier</i>	<i>Note</i>
74002				deleted feature type

**<sup>3</sup> Additional field, not part of GeolInfoDok**

**Theme Areas**

**GEB03\_F**

Via the relation *istTeilVon* the objects of REOs *AX\_Schutzzone* (71012) refer to the ZUSOs of the feature type *AX\_SchutzgebietNachNaturUmweltOderBodenschutzrecht* (71007). The concrete attribution is defined by the attributes *OBJART\_Z* and *OBJID\_Z*. The attributes of the ZUSO are attached to all related REOs.

<b>Field</b>	<b>Data type</b>	<b>Name</b>	<b>Applies to feature types</b>
LAND	Text(3)	landeskennung	71006 AX_NaturUmweltOderBodenschutzrecht
MODELLART	Text(30)	modellartenkennung	71011 AX_SonstigesRecht
OBJART	Text(5)	objektart	71012 AX_Schutzzone
OBJART_TXT	Text(50)	objektartText	
OBJID	Text(16)	eindeutigerObjektidentifikator	
HDU_X	Short Integer(4)	hatDirektUntenExistiert	
BEGINN	Text(20)	lebenszeitintervallBeginnt	
ENDE	Text(20)	lebenszeitintervallEndet	
OBJART_Z	Text(5)	Objektart des ZUSO	71012 (istTeilVon 71007)
OBJID_Z	Text(16)	Objekt-ID des ZUSO	71012 (istTeilVon 71007)
ADF	Text(4)	artDerFestlegung	71006, 71011, 71012
BEZ	Text(60)	bezeichnung	71006, 71011 <sup>2</sup>
NAM	Text(180)	name	71006, 71011, 71012
NRS	Text(20)	nummerDerSchutzzone	71012 <sup>2</sup>
SGN	Text(20)	nummerDesSchutzgebietes	71012
ZON	Text(4)	zone	71012
BEMERKUNG <sup>3</sup>	Text(200)	bemerkung	71006, 71011, 71012



<sup>2</sup> Cancellation in contrast to GeolInfoDok version 6.0

<i>Feature type</i>	<i>Label</i>	<i>Value</i>	<i>Identifier</i>	<i>Note</i>
71006	ADF	1611 1612 1623	Flora-Fauna-Habitat area bird sanctuary protected landscape	deleted attribute value deleted attribute value deleted attribute value
71011	BEZ			deleted attribute
71012	NRS			deleted attribute
71012	ZON	1090 9997	regeneration zone attribute does not apply	deleted attribute value deleted attribute value

<sup>3</sup> Additional field, not part of GeolInfoDok

**Theme Relief**

**REL01\_L**

Via the relation *istTeilVon* the objects of REOs *AX\_Strukturlinie3D* (62030) refer to the ZUSOs of the feature type *AX\_BoeschungKliff* (61001). The concrete attribution is defined by the attributes *OBJART\_Z* and *OBJID\_Z*. The attributes of the ZUSO are attached to all related REOs.

<b>Field</b>	<b>Data type</b>	<b>Name</b>	<b>Applies to feature types</b>
LAND	Text(3)	landeskennung	61003 AX_DammWallDeich
MODELLART	Text(30)	modellartenkennung	61008 AX_Hoehenlinie
OBJART	Text(5)	objektart	62030 AX_Strukturlinie3D <sup>1</sup>
OBJART_TXT	Text(50)	objektartText	62040 AX_Gelaendekante <sup>2</sup>
OBJID	Text(16)	eindeutigerObjektidentifikator	
HDU_X	Short Integer(4)	hatDirektUntenExistiert	
BEGINN	Text(20)	lebenszeitintervallBeginnt	
ENDE	Text(20)	lebenszeitintervallEndet	
OBJART_Z	Text(5)	Objektart des ZUSO	<del>62040</del> <sup>2</sup> 62030 <sup>1</sup> (istTeilVon 61001 <sup>1</sup> )
OBJID_Z	Text(16)	Objekt-ID des ZUSO	<del>62040</del> <sup>2</sup> 62030 <sup>1</sup> (istTeilVon 61001 <sup>1</sup> )
ART	Text(4)	art	<del>62040</del> <sup>2</sup> 62030 <sup>1</sup>
BEZ	Text(60)	bezeichnung	61003 <sup>2</sup>
FKT	Text(4)	funktion	61003
HHL	Float(8,2)	hoeheVonHoehenlinie	61008
HHO	Float(6,1)	objekthoehe	61003, <del>62040</del> <sup>2</sup> 62030 <sup>1</sup> (istTeilVon 61001 <sup>1</sup> )
NAM	Text(100)	name	61003
BEMERKUNG <sup>3</sup>	Text(200)	bemerkung	61003, 61008, <del>62040</del> <sup>2</sup> 62030 <sup>1</sup>

<sup>1</sup> Supplement in contrast to GeolInfoDok version 6.0

<i>Feature type</i>	<i>Label</i>	<i>Value</i>	<i>Identifier</i>	<i>Note</i>
61001				new feature type
61003	FKT	3003	flood protection, storm tide protection with traffic-way	new attribute value
62030				new feature type
62030	ART	1220	upper edge	new attribute with new attribute value
62030	HHO			new attribute

<sup>2</sup> Cancellation in contrast to GeolInfoDok version 6.0

<i>Feature type</i>	<i>Label</i>	<i>Value</i>	<i>Identifier</i>	<i>Note</i>
61003	BEZ			deleted attribute
62040				deleted feature type

<sup>3</sup> Additional field, not part of GeolInfoDok

**Theme Relief**

**REL01\_P**

<i>Field</i>	<i>Data type</i>	<i>Name</i>	<i>Applies to feature types</i>	
LAND	Text(3)	landeskennung	61005 AX_Hoehleneingang	
MODELLART	Text(30)	modellartenkennung		
OBJART	Text(5)	objektart		
OBJART_TXT	Text(50)	objektartText		
OBJID	Text(16)	eindeutigerObjektidentifikator		
HDU_X	Short Integer(4)	hatDirektUntenExistiert		
BEGINN	Text(20)	lebenszeitintervallBeginnt		
ENDE	Text(20)	lebenszeitintervallEndet		
NAM	Text(100)	name		61005
ZNM	Text(100)	zweitname		61005 <sup>1</sup>
BEMERKUNG <sup>3</sup>	Text(200)	bemerkung	61005	

<sup>1</sup> Supplement in contrast to GeolInfoDok version 6.0

<i>Feature type</i>	<i>Label</i>	<i>Value</i>	<i>Identifier</i>	<i>Note</i>
61005	ZNM			new attribute

<sup>3</sup> Additional field, not part of GeolInfoDok

**Theme Relief**

**REL02\_P**

<i>Field</i>	<i>Data type</i>	<i>Name</i>	<i>Applies to feature types</i>
LAND	Text(3)	landeskennung	62020 AX_Punkt3D <sup>1</sup>
MODELLART	Text(30)	modellartenkennung	
OBJART	Text(5)	objektart	
OBJART_TXT	Text(50)	objektartText	
OBJID	Text(16)	eindeutigerObjektidentifikator	
HDU_X	Short Integer(4)	hatDirektUntenExistiert	
BEGINN	Text(20)	lebenszeitintervallBeginnt	
ENDE	Text(20)	lebenszeitintervallEndet	
ART	Text(4)	artDesPunkt3D	
HOEHE <sup>3</sup>	Float(6,1)	hoehe	62020 <sup>1</sup>
BEMERKUNG <sup>3</sup>	Text(200)	bemerkung	62020 <sup>1</sup>

<sup>1</sup> Supplement in contrast to GeolInfoDok version 6.0

<i>Feature type</i>	<i>Label</i>	<i>Value</i>	<i>Identifier</i>	<i>Note</i>
62020				new feature type
62020	ART	1100	special geodetic point	new attribute with new attribute value

<sup>3</sup> Additional field, not part of GeolInfoDok

**Thema Vertical Relation**

**HDU01**

This theme has just one layer without geometry. Here all vertical relations between features (relation *HatDirektUnten*) are recorded in tabular form.

This level is automatically part of any data delivery.

<b>Field</b>	<b>Data type</b>	<b>Name</b>	<b>Applies to feature types</b>
LAND	Text(3)	landeskennung	
OBJART_1	Text(5)	objektart	upper feature
OBJID_1	Text(16)	eindeutigerObjektidentifikator	
EBENE_1	Text(7)	Name der Ebene	
OBJART_2	Text(5)	objektart	lower feature
OBJID_2	Text(16)	eindeutigerObjektidentifikator	
EBENE_2	Text(7)	Name der Ebene	

## 5 Topicality and completeness

The topicality fulfills at least the range of the list of up-to-dateness v6.0.1 of the Basis-DLM of the AdV, state 21.03.2012, regarding the feature types and attributes referred to in the "ATKIS®-Objektartenkatalog DLM250".

The completeness is ensured by the current data of the Basis-DLM of the AdV considering the defined recording criteria of the "ATKIS®-Objektartenkatalog DLM250".

The following feature types have been completely updated in 2018:

<b>Theme</b>	<b>Level</b>	<b>Feature type</b>	<b>Updates</b>
Settlement	SIE01	52001 AX_Ortslage	31.12.2018
	SIE02	41002 AX_IndustrieUndGewerbeflaeche	
		41009 AX_Friedhof	
	SIE03	51002 AX_BauwerkOderAnlageFuerIndustrieUndGewerbe	
		51005 AX_Leitung	
		51006 AX_BauwerkOderAnlageFuerSportFreizeitUndErholung	
	SIE04	51007 AX_HistorischesNauwerkOderHistorischeEinrichtung	
		52003 AX_Schleuse	
	SIE05	52005 AX_Testgelaende	
		31001 AX_Gebaeude	
Traffic	VER01	42002 AX_Strasse	
		42003 AX_Strassenachse	
	VER02	42008 AX_Fahrwegachse	
		53003 AX_WegPfadSteig	
	VER03	42010 AX_Bahnverkehr	
		42014 AX_Bahnstrecke	
	VER04	42015 AX_Flugverkehr	
	VER05	57002 AX_SchiffahrtslinieFaehrverkehr	
	VER06	53001 AX_BauwerkImVerkehrsbereich	
		53002 AX_Strassenverkehrsanlage	
		53004 AX_Bahnverkehrsanlage	
		53007 AX_Flugverkehrsanlage	
		53009 AX_BauwerkImGewaesserbereich	
Vegetation	VEG03	43006 AX_Sumpf	
		43007 AX_UnlandVegetationsloseFlaeche	
	VEG04	54001 AX_Vegetationsmerkmal	

<b>Theme</b>	<b>Level</b>	<b>Feature type</b>	<b>Updates</b>
Water bodies	GEW01	44001 AX_Fliessgewaesser	
		44002 AX_Wasserlauf	
		44003 AX_Kanal	
		44004 AXGewaesserachse	
	44007 AX_Meer		
	GEW02	55001 AX_Gewaessermerkmal	
GEW03	57003 AX_Gewaesserstationierungsachse		
Areas	GEB01	75003 AX_KommunalesGebiet	31.12.2018
		75004 AX_Gebiet_Nationalstaat	31.12.2018
		75005 AX_Gebiet_Bundesland	31.12.2018
		75006 AX_Gebiet_Regierungsbezirk	31.12.2018
		75007 AX_Gebiet_Kreis	31.12.2018
		75009 AX_Gebietsgrenze	31.12.2018
		75011 AX_Gebiet_Verwaltungsgemeinschaft	31.12.2018
	GEB03	71006 AX_NaturUmweltOderBodenschutzrecht	
		71007 AX_SchutzgebietNachUmweltOderBodenschutzrecht	
		71011 AX_SonstigesRecht	
		71012 AX_Schutzzone	

From 2009 to 2017 the other feature types have been completely updated.



## 6 Recording criteria and notes

In the following list detailed recording criteria surpassing the GeoInfoDok Version 6.0 and additional or modified explanatory notes to the individual feature types and attribute values of the DLM250 are given.

Theme Settlement	
52001 AX_Ortslage	By means of the OBJID it is possible to derive more details for the objects by a linkage with the Gazetteer GN250 (available at BKG). An object is also modelled punctiform if it is an independent local authority without a site of its own (association of local authorities).
31001 AX_Gebaeude	The objects with GFK=3041 'church' are not only selected according to cultural, historical or topographical significance, but, also due to the special characteristics of the recording basis, to the object height. Objects with GFK=2073 'shelter (with accommodation)': with an overnight accommodation of more than 19 beds Objects with GFK=2090 'leisure and entertainment venues': important objects which are recognizable as such due to their building Objects with GFK = 3010 'administration building': buildings of the supreme authority of the immediate federal administration Objects with GFK=3011 'parliament': buildings of parliaments of Germany on the levels of the federation and land Objects with GFK=3015 'court': buildings of the supreme authority of the federal courts Objects with GFK=3031 'castle' or GFK=3038 'fortified castle or building' or GFK=3041 'church': recording of all UNESCO world heritage objects, otherwise: selection Objects with GFK=3034 'museum': all objects, if run by the state or the Federal Land, otherwise: selection Objects with GFK=3042 'synagogue': significant buildings, recognizable as such Objects with GFK=3045 'house of worship': significant buildings, recognizable as such Objects with GFK=3046 'mosque': significant buildings, recognizable as such Objects with GFK=3047 'temple': significant buildings, recognizable as such Objects with GFK=3048 'monastery': significant buildings, recognizable as such Objects with GFK=3051 'hospital': all objects with a capacity of at least 500 beds Objects with GFK=3072 'fire department': all objects with the status of a professional fire brigade Objects with GFK=3075 'prison': all objects
41002 AX_IndustrieUndGewerbeflaeche	Objects with FKT=1450 'trade fair, fair' or with FKT=2530 'power station' or with FKT=2550 'refinery' or with FKT=2630 'waste disposal site (above ground)' are recorded completely from an area 20 ha up.
41003 AX_Halde	Objects are recorded completely from an area 20 ha up.

<p>41008 AX_SportFreizeitUndErholungsflaeche</p>	<p>Objects with FKT=4110 'golf course' or FKT=4220 'safari-park, wildlife park' or FKT=4230 'amusement park' or FKT=4250 'open-air museum' are recorded completely from an area 40 ha up. Objects with FKT=4210 'zoo' or FKT=4400 'green space' are recorded completely from an area 20 ha up.</p>
<p>41009 AX_Friedhof</p>	<p>Objects are recorded completely from an area 20 ha up.</p>
<p>51002 AX_BauwerkOderAnlageFuerIndustrieUndGewerbe</p>	<p>Objects with BWF=1220 'settling basin' are recorded completely from an area 4 ha up. Objects with BWF=1220 'wind turbine' are recorded completely beyond 125 m height. Objects with BWF=1700 'mining works' are only recorded for underground exploitation. Objects with BWF=2530 'power station' are recorded punctiform if smaller than 20 ha.</p>
<p>51006 AX_BauwerkOderAnlageFuerSportFreizeitUndErholung</p>	<p>Objects with BWF=1420 'race track, track, horse track' are only recorded if topographically significant. Objects with BWF=1440 'stadium' are recorded completely for a capacity of at least 10 000 spectators. Objects with BWF=1620 'safari-park, wildlife park' or BWF=1630 'amusement park' are recorded punctiform from 10 to 40 ha. Objects with BWF=1610 'zoo' are recorded punctiform from 10 to 20 ha. Objects with BWF=1640 'open-air-theatre' are recorded completely for a capacity of at least 1 000 spectators.</p>
<p>51009 AX_SonstigesBauwerkOderSonstigeEinrichtung</p>	<p>Objects named as "Central Memorial for the Victims of War and Tyranny" by the Federal Republic of Germany are additionally recorded completely.</p>
<p>52002 AX_Hafen</p>	<p>Objects are recorded punctiform up to an area less than 20 ha up, else laminar.</p>
<p>52005 AX_Testgelaende</p>	<p>Objects are recorded completely from an area 20 ha up.</p>

Theme Traffic	
<p>42002 AX_Strasse</p> <p>42003 AX_Strassenachse</p>	<p>Objects of the supralocal road traffic network with a road width of at least 5 meter (solid surface with at least two lanes) are completely recorded.</p> <p>Objects of local roads with a road width of at least 5m (solid surface with at least two lanes) which serve the large-scale development of areas of settlement, industry and industrial real estate are recorded in selection.</p> <p>Traffic routes with one lane are only recorded if they connect topographically important objects which are not otherwise linked to the road traffic.</p> <p>The attribute 'BRF' 'breiteDerFahrbahn' has been calculated on the basis of standard values considering the road category and the number of lanes. The minimum value for one lane is 2,5 meter.</p> <p>The attribute 'BEMERKUNG' contains the remark whether the object is a slip road on or off the major street.</p>
<p>42010 AX_Bahnverkehr</p>	<p>Objects are recorded completely from an area 40 ha up.</p>
<p>42014 AX_Bahnstrecke</p>	<p>Within the generalization several railway lines may run on one linear geometry in an operating sense. The attribute 'NRB' contains the operational line number(s) for the lines of "DB-AG" and of some private railway companies. The line numbers were collected from documents on the DB network. In case of multiple line numbers all of them are listed.</p> <p>The attribute 'ELK' 'elektrifizierung' has the value '1000' 'electrified' if at least one line on the represented linear geometry has an electrified state.</p> <p>The attribute 'GLS' 'anzahlDerStreckengleise' has the value '2000' 'double track' if at least one double track is situated on the represented linear geometry.</p> <p>Due to the limited source material it was not possible to attribute all railway lines completely. Especially for industrial railways the fields 'ELK' and 'GLS' are not attributed in several cases.</p>
<p>53001 AX_BauwerkImVerkehrsbereich</p>	<p>Besides the actual length, the length of an object with ART=1800 'bridge' also depends on the mapping base and for an overpass corresponds to at least the width of the symbol for the overpassed object.</p> <p>Objects with ART=1800 'bridge' over linear modelled water bodies are only recorded for exceptional cases.</p> <p>Objects with ART=1870 'tunnel' are completely recorded in the course of the railway lines.</p>
<p>53003 AX_WegPfadSteig</p>	<p>Objects are only recorded if they lead to topographically important objects which are not otherwise linked to roads or secondary roads.</p>
<p>53004 AX_Bahnverkehrsanlage</p>	<p>Objects not serving the passenger railway traffic are additionally recorded completely.</p>

53008 AX_EinrichtungenFuerDen Schiffsverkehr	Topographically important objects are recorded in the course of coast and sea waterways.
53009 AX_BauwerkImGewaesserbereich	Objects with BWF=2020 'retention basin' are recorded completely from an area 4 ha up.
57002 AX_SchiffahrtlinieFaehrverkehr	Objects with ART=1730 'passenger ferry traffic' are only recorded in the sea. Objects which cross a linear water body are also modelled linear.

<b>Theme Vegetation</b>	
43001 AX_Landwirtschaft	Objects are recorded completely from an area 20 ha up.
43002 AX_Wald	Objects are recorded completely from an area 40 ha up.
43007 AX_UnlandVegetationsloseFlaeche	Objects with OFM=1010 'rock' are recorded completely from an area 5 ha up. Objects with OFM=1040 'sands' are recorded completely from an area 10 ha up. Objects with OFM=1120 'ice, firn' are recorded completely from an area 5 ha up.
54001 AX_Vegetationsmerkmal	Objects with BWS=1020 'stock of trees' are recorded from 10 ha up.

Theme Water bodies	
44002 AX_Wasserlauf 44003 AX_Kanal	Objects receive a water bodies key number in the attribute 'GWK' (only 1st-19th position), if the objects have a water bodies catchment area >10km <sup>2</sup> . These objects have to be reported for the "EU Water Framework Directive"
44005 AX_Hafenbecken	Objects are recorded completely from an area 4 ha up.
44006 AX_StehendesGewaesser	Objects are recorded completely from an area 4 ha up.
55001 AX_Gewaessermerkmal	Objects with ART=1610 'spring-/water hole' are only recorded if hydrological important. Objects with ART=1620 'waterfall' are recorded completely from a height 20 meter up. Objects with ART=1640 'sandbank' are recorded completely from an area 10 ha up. Objects with ART=1650 'tidal flat' are recorded completely from an area 10 ha up.
57003 AX_Gewaesserstationierungsachse	Objects are recorded completely according to the guidelines of the hydrographic authorities.

Theme Areas	
75003 AX_KommunalesGebiet 75004 AX_Gebiet_Nationalstaat 75005 AX_Gebiet_Bundesland 75006 AX_Gebiet_Regierungsbezirk 75007 AX_Gebiet_Kreis 75011 AX_Gebiet_Verwaltungsgemeinschaft	If objects of the administrative areas are placed on sea areas, Lake Constance or – at some big estuaries – on areal modelled watercourses, they are recorded as independent objects.
71006 AX_NaturUmweltOder Bodenschutzrecht	Objects with ADF=1621 'nature conversation area' are recorded completely from an area 200 ha up. Objects with ADF=1624 'nature park' are completely recorded.
74001 AX_Landschaft	Complete recording of the objects which are composed by the <a href="#">permanent committee on geographical names</a> and shown in the webservice 'Landschaften Deutschlands' of the Bundesamtes für Kartographie und Geodäsie. The objects modelled as areas may – due to the topographical location in nature – partially overlap or overlay. The objects don't have a topological connection.

74004 AX_Insel	Objects are recorded completely from an area 4 ha up.
75009 AX_Gebietsgrenze	Objects are completely recorded for all administrative areas.
71011 AX_SonstigesRecht	Military training areas are recorded completely. Garrison training areas are recorded completely from an area 200 ha up.

<b>Theme Relief</b>	
61003 AX_DammWallDeich	Objects not serving FKT=3001 'flood water protection, storm tide protection' or FKT=3003 'flood water protection, storm tide protection with traffic-way, are additionally recorded in selection.
61005 AX_Hoehleneingang	Objects which are not accessible to the public, but are of cultural or historical importance, are additionally recorded.
61008 AX_Hoehenlinie	In consideration of the objects of the water bodies the contours have been automatically derived from the digital terrain model (DGM25, resolution 25 m). The objects are adjusted. The slope direction is located – considered from the initial reference point to the end reference point – on the left. The contour intervals depend on the absolute height: - 25 m for 'lowlands' (up to 100 m) - 50 m for 'low mountains' (over 100 m up to 1500 m) - 100m for 'high mountains' (over 1500 m)
62030 AX_Strukturlinie3D	The objects are adjusted. The slope direction is located – considered from the initial reference point to the end reference point – on the left.
62020 AX_Punkt3D	The 3D-point is recorded with the accuracy desired by the model.

<b>Allgemein</b>	
Ausländisches Staatsgebiet	The extension of the DLM250 is limited on the German federal territory. This also applies to the seaward boundary of the German territory. Adjoining foreign landscape objects are only represented for the following exceptions Areal modelled water bodies with the according axis of water lines, the standing water bodies and possibly existing buildings in water bodies are completely recorded, if the national boundary is situated between the shorelines. Example: Rhein, Oder, Bodensee

## **7 Receipt of data**

The data can be obtained free of charge from our website [www.geodatenzentrum.de](http://www.geodatenzentrum.de) under the heading “Open Data”.

## **8 Usage-Guidelines and List of Sources**

The geodata offered here are available via geodata services in accordance with the Open Data Data License Germany - Attribution – Version 2.0 free of charge for download and for online use.

In particular, each user must identify the source note for all geodata, metadata and geodata services and place it in a visual context. Changes, edits, new designs or other modifications are to be provided with a note of change in the source note.

Source note and change note are to be designed as follows. When displayed on a website or in an app, the source note must be linked to the URL „<http://www.bkg.bund.de>“.

© GeoBasis-DE / [BKG](http://www.bkg.bund.de) < Year receipt of data >

## **9 Contact**

Bundesamt für Kartographie und Geodäsie  
Unit GI5 | Service Center (DLZ)  
Karl-Rothe-Straße 10-14  
D-04105 Leipzig

Phone: +49(0)341 5634 333

Fax: +49(0)341 5634 415

E-Mail: [dlz@bkg.bund.de](mailto:dlz@bkg.bund.de)

For more information, see [www.bkg.bund.de](http://www.bkg.bund.de).