

5th International Conference on Ambient Systems, Networks and Technologies (ANT-2014), the
4th International Conference on Sustainable Energy Information Technology (SEIT-2014)

Integrated analysis of commuters' energy consumption

Daniel Röder^{a,b}, Kai Nagel^{b,*}

^a*Senozon Deutschland GmbH*

^b*Transport Systems Planning and Transport Telematics, TU Berlin, Berlin, Germany*

Abstract

There are strong interactions between energy consumption at home, energy consumption in the office, and energy consumption in the traffic system. For example, workers can tele-commute, saving the energy at the office and in the transport system, but on the other hand increasing energy consumption at home. In addition, telecommuting reduces congestion while, say, making working hours less flexible increases congestion since then everybody needs to travel at the same time. This paper discusses both a simple analytical model and simulation model, including a sophisticated simulation of the transport system, to address these questions.

© 2014 The Authors. Published by Elsevier B.V.

Selection and peer-review under responsibility of Elhadi M. Shakshuki.

Keywords: multi-agent transport simulation; building energy consumption; sustainability

1. Introduction

For many years now, sustainability has been a prominent topic in the public discussion. One problem is energy consumption. About 70 to 75% of the final energy in the European Union (EU) are consumed by transport, dwellings, retail facilities, and offices¹. In this situation, “[t]elecommuting is often cited as a promising strategy for reducing travel demand”², especially in the peak hours. Mokhtarian et al.² further find that noncommute travel also decreases when telecommuting is implemented. Koenig et al.³ state that not necessarily the number of trips but only the travelled distance is reduced, that is, former commuters choose different locations e.g. for their leisure activities. Thus, looking at the consequences of telecommuting approaches to the traffic system seems to be necessary. However, telecommuting does not only affect the traffic system. Agarwal et al.⁴ show empirically that presence at the office/workplace does directly affects the energy consumption. Haldi and Robinson⁵ implement a model that shows the influence of occupants presence and behaviour. Kitou and Horvath⁶ analyze that complex system, particular the consequences to emissions, based on a Monte Carlo Simulation. However, for a detailed planning of the single subsystems a more detailed simulation seems to be necessary. As e.g. stated by Haldi and Robinson⁵, for a detailed simulation of the building energy consumption a lack of occupancy data makes detailed planning impossible.

* Corresponding author. Tel.: +49-30-314-23308 ; fax: +49-30-314-26269.

E-mail address: nagel@vsp.tu-berlin.de

In this work we will show a) the ability to determine consequences of telecommuting to the traffic system and the resulting energy consumption based on an agent-based mesoscopic traffic model MATSim and b) that a model is capable to deliver information about occupants presence to building energy simulation frameworks. For this we will first give a short description of the used traffic simulation MATSim and the selected case study area, Berlin, Germany. Then we describe a basic rule to approximate the final energy consumption. Results will be described for the selected area of Berlin. The following section then describes the methodology and results obtained with simulation model, including a detailed traffic simulation model. The paper is concluded by a discussion and a summary.

2. Transport model and scenario

2.1. Multi-Agent Transport Simulation

The simulation approach used in this paper is based on the software tool MATSim^{7,7}. A short introduction is given here to define the relevant nomenclature. In MATSim, each traveler of the real system is an individual virtual person, modeled as agent. The approach consists of an iterative loop that has the following important steps:

1. **Plans generation:** All agents independently generate daily *plans* that encode, among other things, their desired activities during a typical day as well as the transportation mode. Virtual persons typically have more than one plan (“plans database”). Exactly one plan per agent is selected.
2. **Traffic flow simulation:** All selected plans are simultaneously executed in a simulation of the physical system (often called “network loading”). Events are created for every action agents perform, e.g. a *LinkEnterEvent* for a vehicle or agent entering a link.
3. **Scoring:** All executed plans are scored by a *utility function*. The utility function can be personalized for every individual.
4. **Learning:** At the beginning of every iteration, some agents obtain new plans by modifying copies of existing plans. This is done by several *modules* that correspond to the choice dimensions available, e.g. time choice, route choice, and mode choice. In this paper, no plan modification is allowed.

The repetition of the iteration cycle coupled with the plans database enables the agents to improve (learn) their plans over many iterations. The iteration cycle continues until the system has reached a relaxed state. At this point, there is no quantitative measure of when the system is “relaxed”; the cycle runs until the outcome is stable.

2.2. Scenario: Berlin - Brandenburg

We take an existing scenario for the Berlin region which has been used previously^{8,9}. The network is generated from the OpenStreetMap project (OSM)¹⁰. The MATSim defaults of the OSM-reader are used for converting. The resulting network consists of approx. 24,000 links and 11,000 nodes.

The demand for the current study is derived from a so-called “BVG household survey” from 1994 (also see^{11,12}). That survey contains very detailed trip-diary informations about the daily plan of a person on the specified day. The outcome of this survey results in 57,688 persons performing 209,416 trips. This corresponds to approximately 1% of the population in Berlin-Brandenburg. Approximately 43% of the legs are executed with car and 26% with public transport. The other legs are distributed to bike and walk. 56,160 persons of the synthetical population perform home activities, 23,097 perform work activities. 23,095 build a cut set of persons performing both activity types. This set builds the investigated population group within this study. Note, the mode share for this sub group is slightly different as 54% of all trips are performed by car and 25% with pt.

To derive a basecase, the simulation was run for 1,000 iterations. Agents are allowed to replan in two dimensions, time scheduling and routing, until iteration 800; afterwards, they can only chose between existing plans. The outcome is a calibrated scenario which is used as base for the further research. Calibrated means the agents scores do not change any more (Fig. 1c), and the simulated and real traffic counts are close to each other as shown in Fig. 1a and 1b.

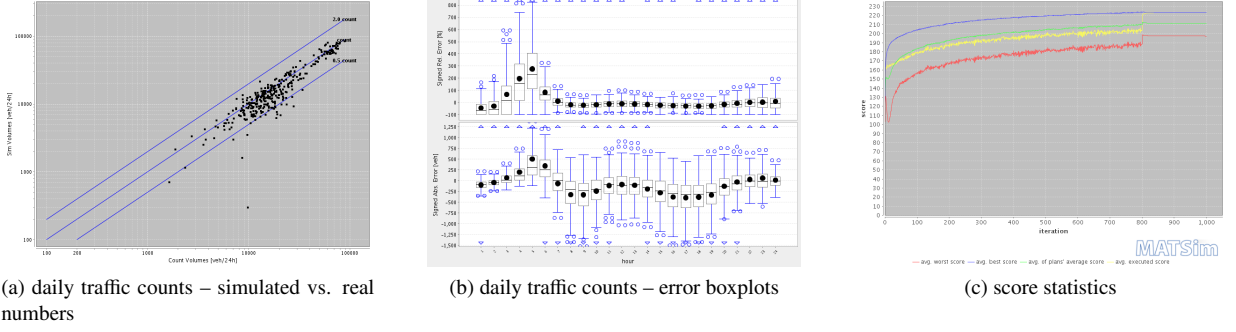


Fig. 1: Berlin-Brandenburg results for the basecase after 1,000 iterations.

3. Mathematical Model

As a benchmark, we first consider a “back-of-the-envelope” model for the calculation of building energy consumption, including the average commuter energy consumption.

3.1. Approach

It is assumed that offices open and close at t_s and t_e , and that core hours—where everybody needs to be present—are from t_{cs} until t_{ce} . Therefore $t_s \leq t_{cs} \leq t_{ce} \leq t_e$. For the probability $p(t)$ for a person being at time t it is assumed that all persons are at work within the core hours. For the times between t_s and t_{cs} and again between t_{ce} and t_e , it is assumed that persons arrive and depart with constant rates, i.e. $(t - t_s)/(t_{cs} - t_s)$ for $t_s \leq t \leq t_{cs}$ and $(t - t_{ce})/(t_e - t_{ce})$ for $t_{ce} \leq t \leq t_e$. This implies that the average work duration is $(t_{ce} + t_e)/2 - (t_s + t_{cs})/2$, where, for example, “early” people will work from t_s until t_{ce} , and “late” people from t_{cs} until t_e .

Now a total number of persons n_p and a number of persons n_w going to work on the analyzed day is defined. The number of persons being at work $n_{pw}(t)$ and at home $n_{ph}(t)$ for a certain time slice given by the following equations:

$$n_{pw}(t) = p(t) \cdot n_w \quad (1)$$

$$n_{ph}(t) = n_p - n_{pw}(t) \quad (2)$$

It is assumed the energy consumption for a “typical” office is defined by a saturation function. Thus, the energy consumption rate for all offices $e_o(t)$ is defined with a base load P_{bo} and the additive saturation load P_{so} , resulting in

$$e_o(t) = n_o \cdot (P_{bo} + P_{so} \cdot (1 - e^{-\rho_o(t)\beta})) , \quad (3)$$

where $\rho_o(t) = n_{pw}(t)/n_p$ and $\beta > 0$ is a parameter.

Similarly, for “typical” homes the energy consumption rate $e_h(t)$ is approximated with a base load P_{bh} and an additive actual load P_{ah} :

$$e_h(t) = n_p \cdot P_{bh} + n_{ph}(t) \cdot P_{ah} , \quad (4)$$

where the model assumes that there is either one person at home or none.

For the energy of the daily commute, we define an average daily commute distance d_c and shares of car users s_{car} and pt users s_{pt} . From this we get the share for other modes $s_o = 1 - (s_{car} + s_{pt})$. Further we know about the specific energy consumptions per mode per distance, e_{car} , e_{pt} and e_{other} . Thus, the required energy for the daily commute E_c and the total required energy E_{abs} are defined as:

$$E_c = (E_{car} \cdot s_{car} + E_{pt} \cdot s_{pt} + E_{other} \cdot s_o) \cdot n_w \cdot d_c, \quad (5)$$

$$E_{abs}(t) = E_c + \int_{0:00}^{24:00} (e_o(t) + e_h(t)) dt . \quad (6)$$

Note that since $p(t)$ is piecewise linear, $\rho_o(t)$ is also piecewise linear, and therefore the integral can be solved analytically.

3.2. Case studies

The following variations are considered:

- The number of persons travelling to work is 23,095 in one configuration (see Sec. 2.2), and 20,771 in the other. This models **teleworking**, i.e. some part of the population works at home. The models will assume that each worker selects his or her telecommuting days randomly, that is, it will be assumed that offices are occupied at the 80% rather than at the 100% level.
- The office core hours, $[t_{cs}...t_{ce}]$, are $[10...14]$ in one configuration, and $[9...15]$ in the other. This models **reduced flexibility**. The idea is that extending the core hours forces people on more similar working hours, thus reducing the time period during which the building needs to be heated.

This leads to 4 case studies, see Tab. 1.

Table 1: Parameter settings for the mathematical case studies. 2 & 4 – telecommuting; 3 & 4 – reduced flexibility.

parameter			c1	c2	c3	c4
core hour start	t_{cs}	[h]	10	10	9	9
core hour end	t_{ce}	[h]	14	14	15	15
persons total	n_p	[#]	23,095	23,095	23,095	23,095
persons working	n_{pw}	[#]	23,095	20,771	23,095	20,771

3.3. Additional information

For the analysis of the scenario we investigate the period from midnight to midnight. We set the average work duration, including part-time jobs, to $t_w = 6h$; note that for this, the workplace opening/closing times need to be $[t_s...t_e] = [8...16]$ in the first case, and $[9...15]$ in the second case. That is, the longer core hours go along with a shorter overall office opening and thus heating time.

To analyze the energy consumption we need to know about the installed power for home and work locations for empty and occupied locations per person. We derived plausible numbers as follows. The annual energy consumption by **households** in Germany is approximately 2400 PJ.* Further the German “Bundesamt für Statistik”† states that the total number of dwellings is 36 089 000, and the average number of persons per dwelling is 2.0. Thus, an average household consumes

$$\frac{2400 \text{ PJ/yr} \cdot 112 \text{ TWh/400 PJ}}{36\,089\,000 \text{ dwellings} \cdot 2.0 \text{ persons/dwelling} \cdot 365 \text{ days/yr}} \approx 25.5 \text{ kWh/day}$$

per person. From the daily energy consumption one may approximate the base load P_{bh} and the additive actual load P_{ah} . Agarwal et al.⁴ show the dependency of occupants presence on energy consumption. Although they showed it only for office buildings we assume the same distribution for dwellings, i.e. the off-peak power usage is $\alpha = 30\%$ of the peak usage. Re-writing Eq. (4) for a 24 hr period, we obtain

$$25.5 \text{ kWh} \stackrel{!}{=} 24 \text{ h} \cdot P_{bh} + t \cdot P_{ah},$$

where t is the duration of the person being at home. Together with $P_{bh} = \alpha \cdot (P_{bh} + P_{ah})$ and $t = 17h$ (consistent 6 hours of work and two times 0.5 hours of commuting), we derive P_{bh} and P_{ah} as shown in Tab. 2.

* www.bmwi.de/BMWi/Redaktion/Binaer/Energiedaten/energiegewinnung-und-energieverbrauch3-struktur-energieverbrauch, accessed 11-feb-2014.

† www.destatis.de/DE/ZahlenFakten/GesellschaftStaat/EinkommenKonsumLebensbedingungen/Wohnen/Tabellen/BewohnteWohneinheiten.html, accessed 27-nov-2013.

‡ No valid source available, thus we used 50% of the specific energy of car.

Table 2: Power settings, specific energy consumption and modeshare.

P_{bo} [kW/Person]	P_{so} [kW/Person]	P_{bh} [kW/Person]	P_{ah} [kW/Person]	E_c [MJ/km]
0.185	0.433	0.400	0.934	1.771
E_{pt}^{\S} [MJ/km]	E_{other} [J/km]	s_c [%]	s_{pt} [%]	d_c [km]
885	0	54.0	25.0	41.5

To derive numbers for **offices** we use the so called german “Technische Regeln für Arbeitsstätten” (ASR A1.2) which define the minimum office size. For the first person a minimum space of 8 m² is required. For every further person at least 6 m² are required. For reasons of simplicity we assume every work place occupies 8 m². The energy consumption E per m² and year is 120 kWh for electricity and 100 kWh for heating.[§] To derive the maximum power per workplace we define a number of working days n_{work} and again an α to describe the off peak usage and a t to describe the working duration. With Eq. 7 and using $n_{work} = 219$, $t = 8h$ and $\alpha = 0.3$, we can calculate the maximum power $P_{max,work}$ equals to 0.496 kWh per additional person.

$$P_{max,work} = \frac{E}{n_{work} \cdot (t + (24h - t) \cdot \alpha) + \alpha \cdot (365 - n_{work}) \cdot 24h} \quad (7)$$

From there, $P_{bo} = 0.3 \cdot 0.618$ and $P_{ao} = 0.7 \cdot 0.618$.

The energy parameters for the **transport system** are calculated as follows. For car, we use the average consumption of a usual german middle class car[¶] of 5.49 l/100km. One liter gas contains an energy of approx. 43 MJ/kg with a density of 0,75 kg/l. Thus the specific energy E_c is 1.771 MJ/km. As shown in Tab. 2, the commuting distance is assumed as 41.5 km, the modal split as 54% car, 25% public transit, and the remaining 21% non-motorized, and the specific energy consumption when using public transit is assumed as half that of car.

3.4. Results

The results of the energy calculation, displayed in Fig. 2a, display the following characteristics:

- Telecommuting reduces the transport energy, but increases the energy consumed at home by rather more. In contrast, the office energy is barely affected.
- Reducing the office heating period by extending the core hours has rather little effect overall.

The reason why telecommuting has so little effect on the office energy is that, because of the non-linear saturation function, there is not much difference if offices are occupied. In consequence, reducing the heating time by concentrating the occupancy on fewer hours has rather more effect than telecommuting – still, the effect is not very large. The reason presumably is that the entire effect is due to the non-linearity of the office energy consumption function – were that function linear, there would not be any effect. Thus, the non-linearity is not strong enough to yield strong results when the heating period of the office buildings is shortened.

Overall, the initial speculation that companies might be able to reduce their energy bill at the expense of their employees is not truly borne out: The savings that the companies could make seem rather small. If companies consider the telecommunication policy in order to save energy, they need to make sure that full offices are made empty and thus not heated.

[§] www.energie.ch/buero, accessed 27-nov-2013.

[¶] Volkswagen Golf VI, 1,400 ccm, 90kW, see: <http://www.adac.de/infotestrat/tests/eco-test/detail.aspx?IDMess=3274>, last access: November 27, 2013

4. Simulation

4.1. Approach

To analyze the building energy consumption based on a traffic model the standard MATSim output is used and post processed to derive the necessary data from the generated events. For this the analysis is divided into two parts, a) the analysis of the building energy consumption and b) the analysis of the commute energy Consumption.

For the **Building Energy Analysis** so called *ActivitStart-* and *ActivityEndEvents* are used. These events are generated every time an agent starts or ends an activity on a Link. Using those events the maximum number of activities performed in a certain time slice is counted. The office size per link is defined by the maximum of activities of type “work” on this link. For the calculation of the consumed energy on a certain link with working activities we use Eq. 3 with $n_o = 1$ and n_p equals the maximum number of persons working on a link in any time slice and $n_{pw} = n_{pw.link}$. For the energy consumed by home activities we use a variation of Eq. 4 with n_p equals the total number of agents performing home activities and n_{ph} equals the number of agents performing a home activity in a certain time slice.

To calculate the **energy consumption of all commuters**, Eq. 5 is used. The distance travelled is calculated for every single trip, i.e. so called *LinkEnter-* and *LinkLeaveEvents* are used to calculate the travel distance. The distance, and thus the consumed energy, is calculated for the whole day plan of all commuters.

4.2. Setup

Based on the scenario described in Sec. 2.2, four different simulation case studies (s1 ... s4) are set up (cf. Tab. 3)

- **s1** is the basecase run, with all parameters unchanged.
- **s2** models **telecommuting** by reducing the number of persons in the travel model by 20%. We assume they will stay the whole day at home.
- **s3** models **reduced temporal flexibility**. The specific values (Tab.3) are different from the analytical model since in the real-world situation, actual work durations vary greatly between persons. In particular, long core hours would not work for many part time jobs.
- **s4** models **telecommuting and longer core hours together**.

Table 3: Setup for simulated case studies

parameter		s1	s2	s3	s4
ActivityOpeningTime_work	[hh:mm]	07:00	07:00	08:00	08:00
ActivityClosingTime_work	[hh:mm]	19:00	19:00	17:00	17:00
ActivityTypicalDuration_work	[hh:mm]	06:30	06:30	06:30	06:30
ActivityLatestStartTime_work	[hh:mm]	13:00	13:00	12:00	12:00
persons total	[#]	56,160	56,160	56,160	56,160
persons working	[#]	23,095	23,095	23,095	23,095
person commuting	[#]	23,095	20,771	23,095	20,771

For all studies 300 iterations were run. Innovative replanning modules (routing, departure time modification) were disabled after 240 iterations. For the building energy analysis the period is split into 144 time slices k with a duration $t_d = 0.25h$. The energy consumptions parameters from Tab. 2 are used here as well.

4.3. Results

The simulation results (Fig. 2b) confirm the results of the analytical model of Sec. 3. Fig. 3 shows how the change of the office opening times/core hours affects the probability of being at work: The model predicts fewer workers at early and late hours. The model, in fact, predicts fewer work hours overall – presumably, this is the reaction of MATSim’s scheduling algorithm to the stronger constraints.

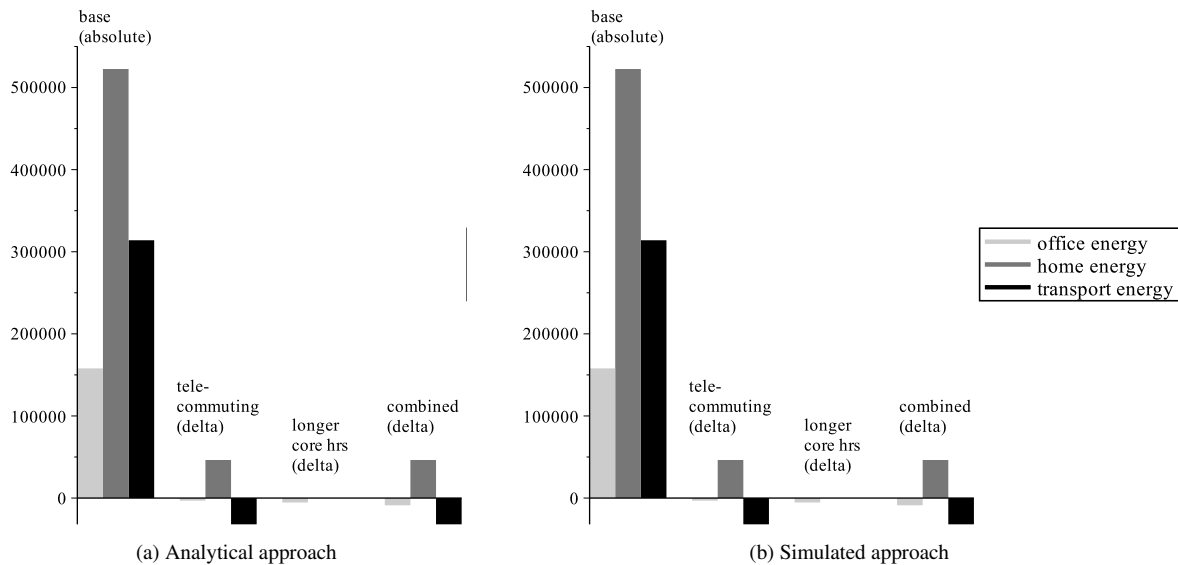


Fig. 2: Energy consumptions for the one percent sample.

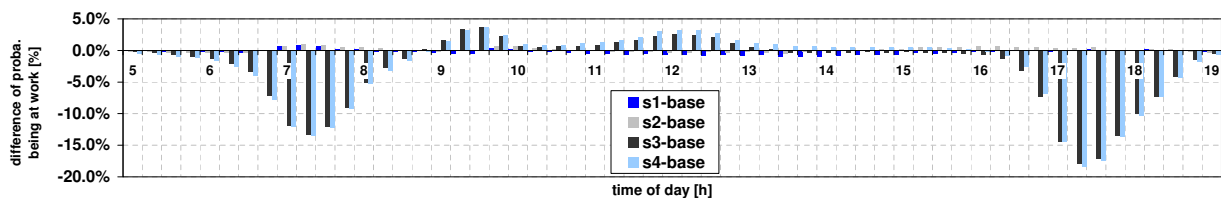


Fig. 3: Differences to the base case (s1) of the probability of being at work. 2 & 4 – telecommuting; 3 & 4 – reduced flexibility.

Table 4: Results for simulated case studies. 2 & 4 – telecommuting; 3 & 4 – reduced flexibility.

		s1	s2	s3	s4
avg. trip distance (car-commuter)	[km]	14.66	14.56	14.63	14.56
avg. trip traveltime (car-commuter)	[min]	39.64	35.38	41.19	36.26

The most significant difference is actually in the congestion times, see Tab. 4: reducing flexibility clearly increases congestion (s3 vs. s1 and s4 vs. s2). In contrast, introducing telecommuting clearly reduces congestion (s2 vs. s1 and s4 vs. s3). Still, the congestion effect of the reduced flexibility is probably less than anticipated. Reasons may be that, in Berlin, commuting is only about 20% of the demand¹³, and that, because of the many part-time jobs, even the reduced workplace opening time leave quite some flexibility.

5. Discussion

While the transport model is fairly sophisticated, other parts of the model are arguably somewhat ad-hoc. There are, however, structural statements which we would expect to hold up with any model:

- The energy consumption of the transport system is mostly proportional to the distance. As a result, the 20% reduction of commuter mileage because of tele-commuting has a much stronger effect than the congestion differences by the changes in the office opening hours.

- The savings in transport energy are offset by more consumption of energy at home, although the increase of home energy consumption are probably overstated, since not everybody is living alone or in a dual worker household as the model assumes.
- It also seems plausible that individuals consume less space in offices than at home. Also, it is probably easier to make office buildings energy efficient rather than homes. Thus, once people are at their offices, they are probably more energy efficient there than at their homes.

6. Conclusion

The presented work shows that it is possible to derive information about activity scheduling from a microscopic traffic model. This information may be delivered to a building energy consumption model. For this work a simple model without any detailed information about building specific consumption profiles is used.

The results show a) the consequences of telecommuting to a traffic system and b) the consequences to the resulting energy consumption. As a tendency, telecommuting increases home consumption, reduces transport energy, and does not change office energy consumption very much. The last result hinges on the assumption that telecommuting days are selected randomly, meaning that all offices are somewhat affected, rather than emptying out fewer offices completely. In contrast, changing the office opening times/core hours has rather little effect in terms of energy consumption. The most notable effect is an increase in congestion.

Overall, it seems that neither of these two measures – telecommuting or reducing flexibility – offers an easy handle to reduce energy consumption. Maybe as importantly, there is little incentive for employers/offices to use one of the two measures to “push” the energy consumption into different sectors of the economy, since their own savings would not be very large.

References

1. Eurostat, . Energy – yearly statistics 2006. Tech. Rep.; 2008. doi:10.2785/15095.
2. Mokhtarian, P.L., Handy, S.L., Salomon, I.. Methodological issues in the estimation of the travel, energy, and air quality impacts of telecommuting. *Transportation Research Part A: Policy and Practice* 1995;**29**(4):283–302. URL: <http://escholarship.org/uc/item/44n3k2jp.pdf>.
3. Koenig, B.E., Henderson, D.K., Mokhtarian, P.L.. The travel and emissions impacts of telecommuting for the State of California telecommuting pilot project. *Transportation Research Part C: Emerging Technologies* 1996;**4**(1):13–32. URL: <http://escholarship.org/uc/item/1337n657.pdf>.
4. Agarwal, Y., Balaji, B., Gupta, R., Lyles, J., Wei, M., Weng, T.. Occupancy-driven energy management for smart building automation. In: *Proceedings of the 2nd ACM Workshop on Embedded Sensing Systems for Energy-Efficiency in Building*. ACM; 2010, p. 1–6. URL: http://synergy.ucsd.edu/yuvraj/docs/Agarwal_BuildSys10_Occupancy.pdf.
5. Haldi, F., Robinson, D.. The impact of occupants' behaviour on building energy demand. *Journal of Building Performance Simulation* 2011;**4**(4):323–338. URL: <http://dx.doi.org/10.1080/19401493.2011.558213>. doi:10.1080/19401493.2011.558213.
6. Kitou, E., Horvath, A.. Energy-related emissions from telework. *Environmental Science & Technology* 2003;**37**(16):3467–3475.
7. Raney, B., Nagel, K.. An improved framework for large-scale multi-agent simulations of travel behaviour. In: Rietveld, P., Jourquin, B., Westin, K., editors. *Towards better performing European Transportation Systems*. London: Routledge; 2006, p. 305–347.
8. Nagel, K.. Towards simulation-based sketch planning, part II: Some results concerning a freeway extension in Berlin. VSP Working Paper 11-18; TU Berlin, Transport Systems Planning and Transport Telematics; 2011. See www.vsp.tu-berlin.de/publications.
9. Flötteröd, G., Chen, Y., Nagel, K.. Choice model refinement from network data 2012; Also VSP WP 12-08, see www.vsp.tu-berlin.de/publications.
10. OpenStreetMap, . Map data © OpenStreetMap contributors, CC BY-SA. <http://www.openstreetmap.org>; 2013. URL: <http://www.openstreetmap.org>.
11. Scheiner, J.. Daily mobility in Berlin: On 'inner unity' and the explanation of travel behaviour. *European Journal of Transport and Infrastructure Research* 2005;**5**:159–186.
12. Kutter, E., Mikota, H.J., Rümenapp, J., Steinmeyer, I.. Untersuchung auf der Basis der Haushaltsbefragung 1998 (Berlin und Umland) zur Aktualisierung des Modells “Pers Verk Berlin / RPlan”, sowie speziell der Entwicklung der Verhaltensparameter '86-'98 im Westteil Berlins, der Validierung bisheriger Hypothesen zum Verhalten im Ostteil, der Bestimmung von Verhaltensparametern für das Umland. Draft of the final report; Sponsored by the “Senatsverwaltung für Stadtentwicklung Berlin”; Berlin/Hamburg; 2002.
13. PTV/TCI, . Gesamtverkehrsprognose 2025 für die Länder Berlin und Brandenburg. 2009. URL: http://gvp2025.net/ergebnisse/GVP2025_Ergebnisbericht_2009.pdf.